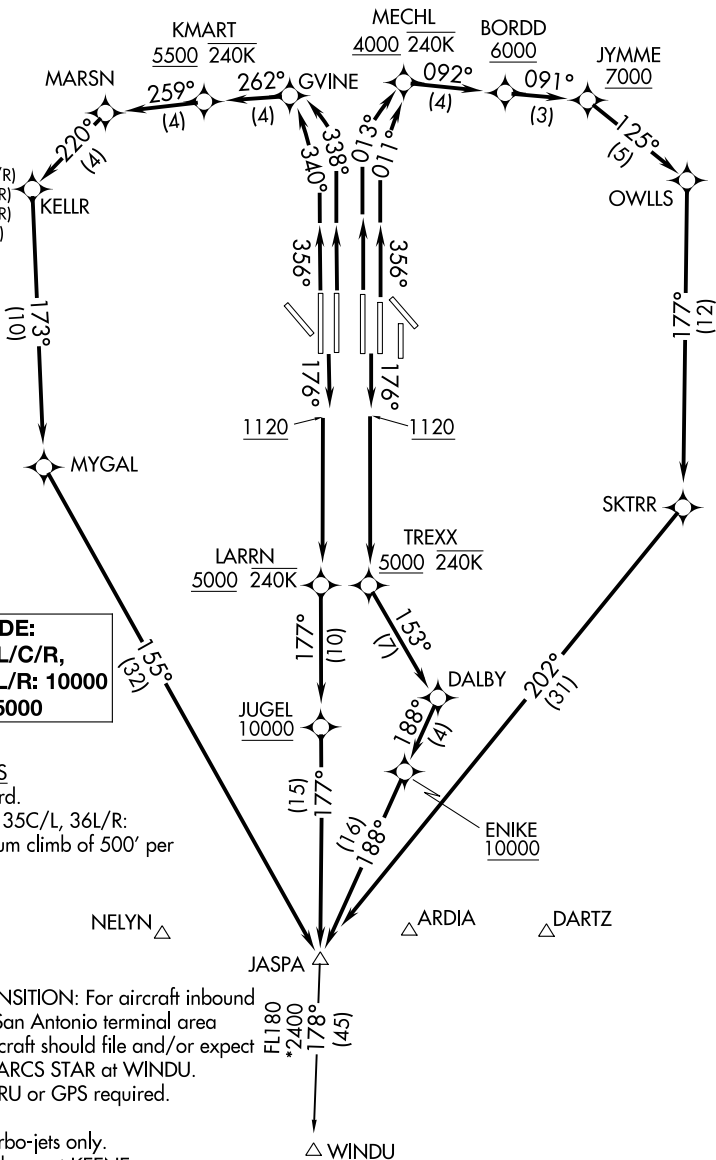


D-ATIS DEP 135.925  
CLNC DEL 128.25  
CPDLC  
GND CON  
121.65 121.8 (EAST)  
121.85 (WEST)  
DFW TOWER  
126.55 127.5 (EAST)  
124.15 134.9 (WEST)  
REGIONAL DEP CON  
125.125 353.95 (Rwy  
125.125 353.95 (Rwy  
126.475 363.15 (Rwy  
118.55 290.35 (Rwy



**TOP ALTITUDE:**  
RWY 13L/R, 17L/C/R,  
18L/R, 35L/C/R, 36L/R: 10000  
RWY 31L/R: 5000

## TAKEOFF MINIMUMS

Rwys 31L/R: Standard.  
Rwys 17C/R, 18L/R, 35C/L, 36L/R:  
Standard with minimum climb of 500' per  
NM to 1120.

NOTE: WINDU TRANSITION: For aircraft inbound to Austin or San Antonio terminal area airports. Aircraft should file and/or expect BLEWE or MARCS STAR at WINDU.

NOTE: DME/DME/IRU or GPS required.

NOTE: RNAV 1.

NOTE: For use by turbo-jets only.

NOTE: Props file and expect KEENE or TRI-GATE DEPARTURE.

NOTE: RADAR required.

NOTE: Chart not to scale.

(NARRATIVE ON FOLLOWING PAGE)

## JASPA SIX DEPARTURE (RNAV)

(JASPA6.JASPA) 10OCT19

DALLAS-FORT WORTH, TEXAS

DALLAS-FORT WORTH INTL (DFW)

SC-2, 31 DEC 2020 to 28 JAN 2021