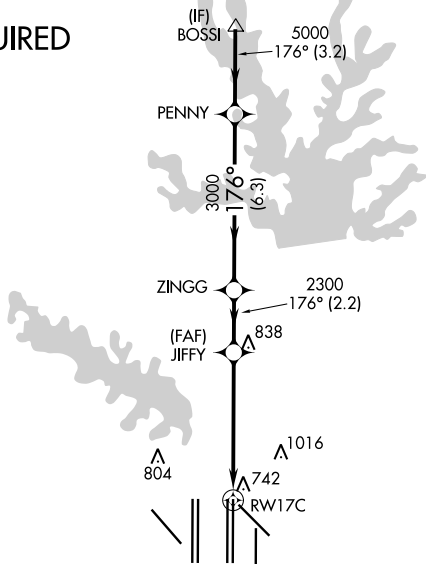


RNAV (GPS) RWY 17C
DALLAS-FORT WORTH INTL (DFW)

MISSED APPROACH: Climb to at or below 3000 direct YUPRU then climb to 4000 on track 176° to RAYMA and hold.

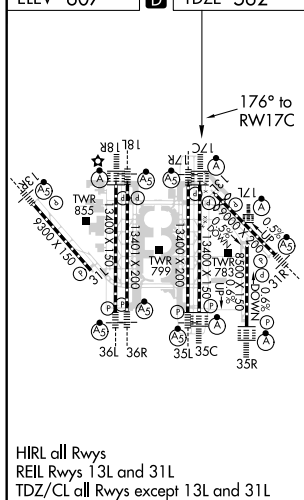
ATIS	REGIONAL APP CON 127.075	DFW TOWER		GND CON		CLNC DEL 128.25	CPDLC
ARR 123.775		126.55	127.5 EAST	121.65	121.8 EAST		
DEP 135.925		124.15	134.9 WEST	121.85	WEST		

A digital scale with a circular display. The text "MSA RW17C 25 NM" is curved along the top edge. The digital display shows the number "3600". Below the display is a small circular icon with a crosshair.



1548 Δ

ELEV 607		TDZE 562
----------	---	----------



HIRL all Rwy's
REIL Rwy's 13L and 31L
TDZ/CL all Rwy's except 13L and 31L

