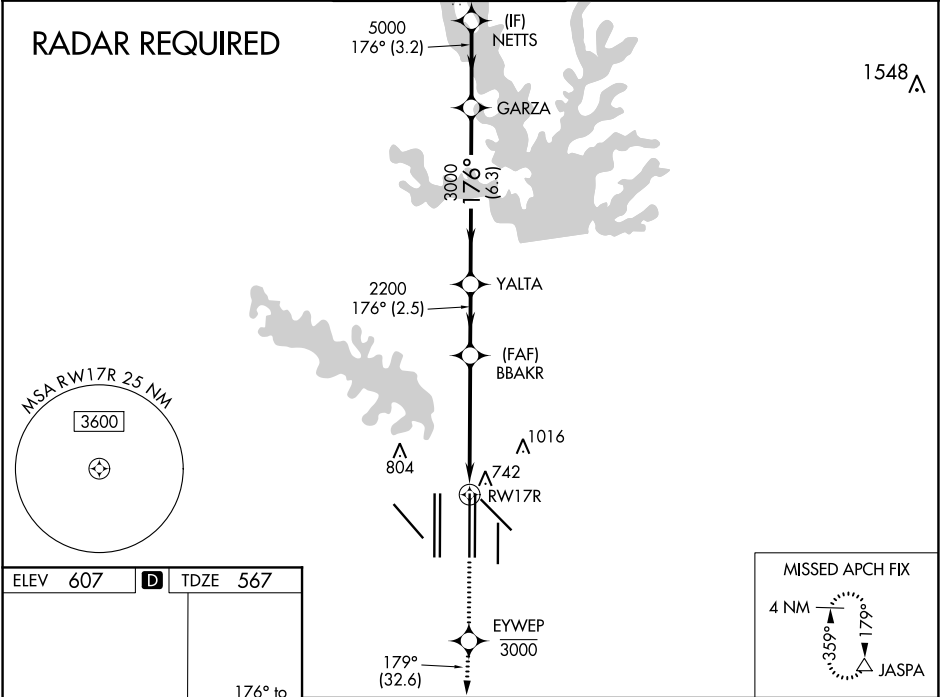


WAAS CH <b>53505</b> <b>W17A</b>	APP CRS <b>176°</b>	Rwy Idg <b>13400</b> TDZE <b>567</b> Apt Elev <b>607</b>	RNAV (GPS) RWY 17R DALLAS-FORT WORTH INTL (DFW)
--	------------------------	--	--

<div>▼ For uncompensated Baro-VNAV systems, LNAV/VNAV NA below -4°C (25°F) or above 54°C (130°F). Simultaneous approach authorized with Rwy 17L and Rwys 18L/R. DME/DME RNP-0.3 NA. For inop MALSR increase LNAV/VNAV all Cats visibility to 1½ mile. LNAV procedure NA during simultaneous operations. Use of FD or AP providing RNAV track guidance required during simultaneous operations.</div>			<div>MALSR</div> <div></div>	<div>MISSED APPROACH: Climb to at or below 3000 direct EYWEP then climb to 4000 on track 179° to JASPA and hold.</div>	
D-ATIS ARR <b>123.775</b> DEP <b>135.925</b>	REGIONAL APP CON <b>127.075</b>	DFW TOWER <b>126.55 127.5</b> EAST <b>124.15 134.9</b> WEST	GND CON <b>121.65 121.8</b> EAST <b>121.85</b> WEST	CLNC DEL <b>128.25</b>	CPDLC



<div>HIRL all Rwys</div> <div>REIL Rwys 13L and 31L</div> <div>TDZ/CL all Rwys except 13L and 31L</div>		<div>3000</div> <div>EYWEP</div> <div>4000</div> <div>JASPA</div> <div>VGSI and RNAV glidepath not coincident (VGSI Angle 3.00/TCH 68).</div>		<div>NETTS</div> <div>GARZA</div> <div>YALTA</div> <div>BBAKR</div> <div>2200</div> <div>3000</div> <div>5000</div> <div>6000</div> <div>GP 3.00°</div> <div>TCH 54</div>	
<div>*LNAV only.</div> <div></div>		CATEGORY		A	
LPV		DA		767/18	
LNAV/VNAV		DA		1066/60	
LNAV		MDA		1000/24	
				433 (400-½)	
				1000/40	
				433 (400-¾)	