

WAAS CH 99407 W18B	APP CRS 176°	Rwy Idg 13400 TDZE 607 Apt Elev 607
--	------------------------	--

RNAV (GPS) RWY 18R

DALLAS-FORT WORTH INTL (DFW)

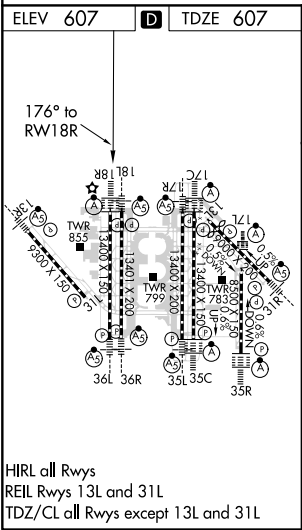
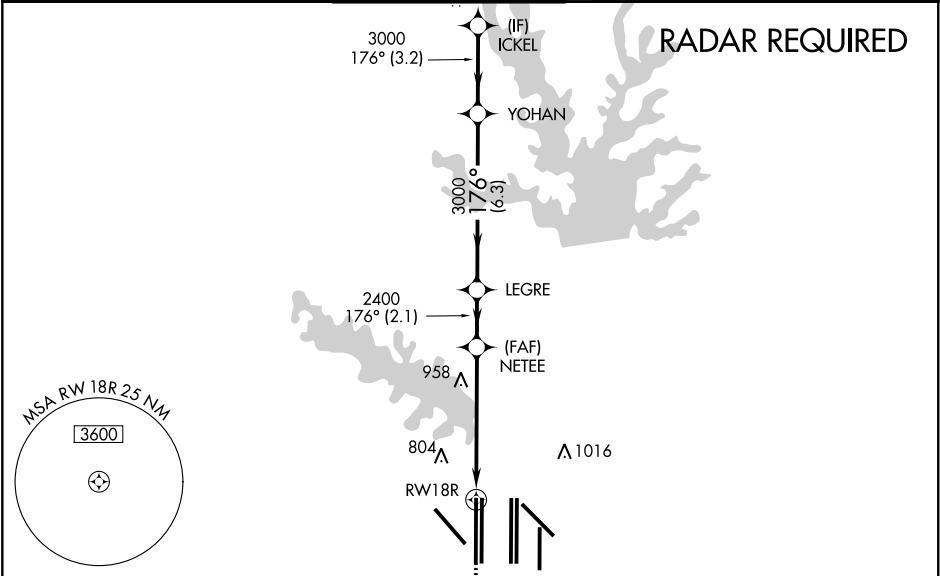
⚠

For uncompensated Baro-VNAV systems, LNAV/VNAV NA below -4°C (25°F) or above 54°C (130°F). For inop ALSF, increase LNAV Cat C/D visibility to 1¾ mile. Simultaneous approach authorized with Rwy 17L/C/R. DME/DME RNP-0.3 NA. LNAV procedure NA during simultaneous operations. Use of FD or AP providing RNAV track guidance required during simultaneous operations.

ALSF-2

MISSED APPROACH: Climb to 1100 then climbing right turn to 3000 direct LIKES and hold.

D-ATIS ARR 123.775 DEP 135.925	REGIONAL APP CON 118.425	DFW TOWER 126.55 127.5 EAST 124.15 134.9 WEST	GND CON 121.65 121.8 EAST 121.85 WEST	CLNC DEL 128.25	CPDLC
--	------------------------------------	---	---	---------------------------	-------



MISSED APCH FIX 4 NM		LIKES		VGSI and RNAV glidepath not coincident (VGSI Angle 3.00/TCH 74).		ICKEL	
1100		3000		NETEE		LEGRE	
*LNAV only.		*1.7 NM to RWY 18R		2400		3000	
RWY 18R		1.7		3.8 NM		2.1 NM	
				6.3 NM		3.2 NM	
CATEGORY		A		B		C	
LPV DA				807/18		200 (200-½)	
LNAV/VNAV DA				980/40		373 (400-¾)	
LNAV MDA		1220/24		613 (700-½)		1220-1¾ 613 (700-1¾)	