

WAAS CH 87005 W36A	APP CRS 356°	Rwy Idg 13401 TDZE 581 Apt Elev 607
--	------------------------	--

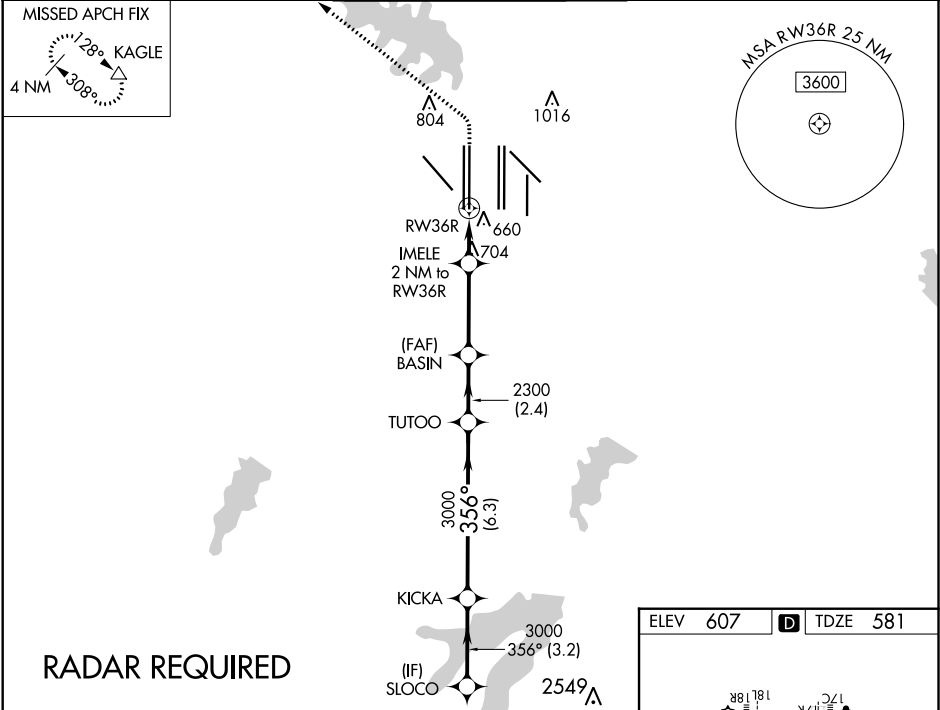
RNAV (GPS) RWY 36R
DALLAS-FORT WORTH INTL (DFW)

▼ For uncompensated Baro-VNAV systems, LNAV/VNAV NA below -4°C (25°F) or above 54°C (130°F). For inop MALSR, increase LNAV Cats C/D visibility to RVR 5500. Simultaneous approach authorized with Rwy 35L/C/R. DME/DME RNP-0.3 NA. LNAV procedure NA during simultaneous operations. Use of FD or AP providing RNAV track guidance required during simultaneous operations.

MALSR

MISSED APPROACH: Climb to 1100 then climbing left turn to 3000 direct KAGLE and hold.

D-ATIS ARR 123.775 DEP 135.925	REGIONAL APP CON 118.425	DFW TOWER 126.55 127.5 EAST 124.15 134.9 WEST	GND CON 121.65 121.8 EAST 121.85 WEST	CLNC DEL 128.25	CPDLC
--	------------------------------------	---	---	---------------------------	-------



SLOCO		KICKA		TUTOO		BASIN		IMELE 2 NM to RW36R		RW36R	
4000		356°		3000		2300		*1260		356° (3.2)	
GP 3.00° TCH 50		3.2 NM		6.3 NM		2.4 NM		3.3 NM		1 NM	
CATEGORY		A		B		C		D			
LPV DA		781/18		200 (200-½)							
LNAV/VNAV DA		941/40		360 (400-¾)							
LNAV MDA		960/24		379 (400-½)		960/35		379 (400-¾)			

ELEV 607 **D** TDZE 581

HIRL all Rwy's
REIL Rwy's 13L and 31L
TDZ/CL all Rwy's except 13L and 31L