

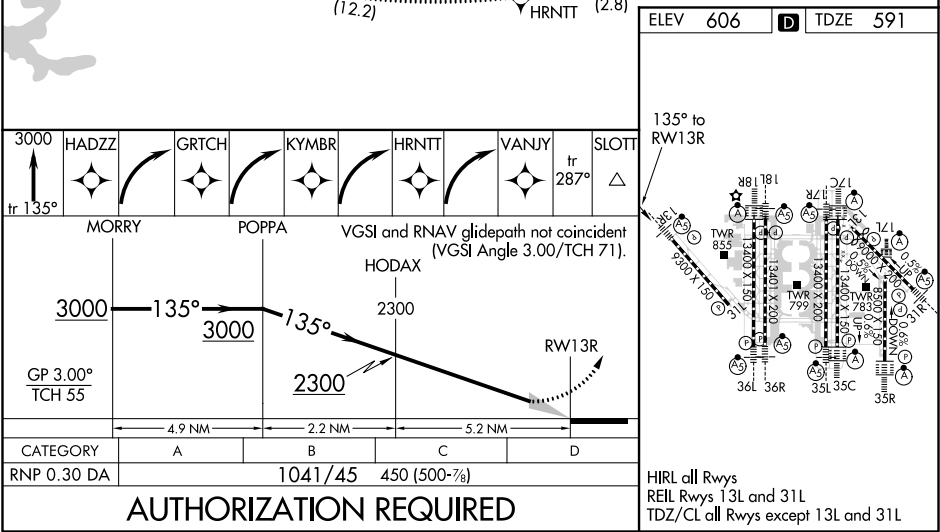
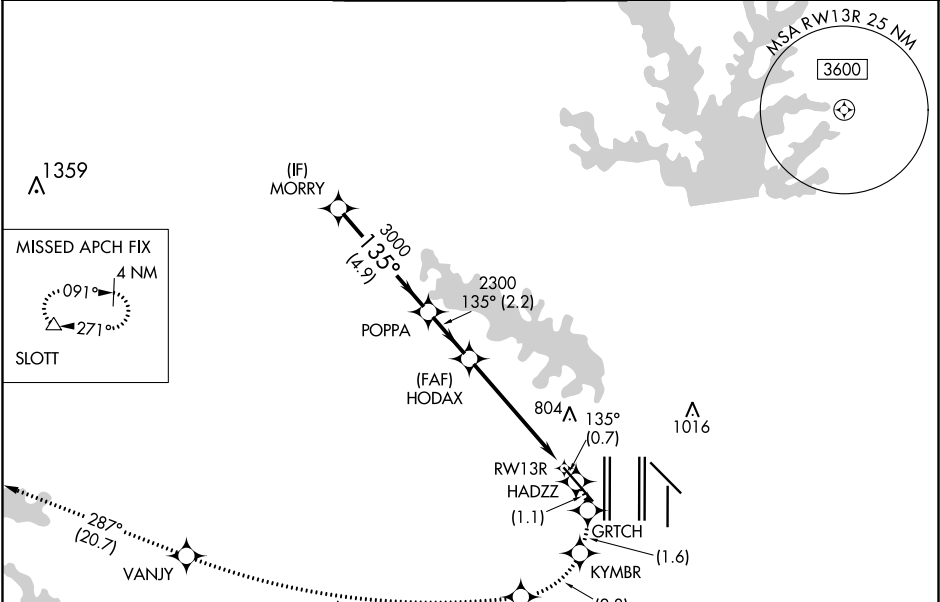
APP CRS	Rwy Idg	9300
135°	TDZE	591
	Apt Elev	606

RNAV (RNP) Z RWY 13R
DALLAS-FORT WORTH INTL (DFW)

RNP AR APCH. RF required.	
For uncompensated Baro-VNAV systems, procedure NA below -6°C or above 54°C. Missed approach requires RNP less than 1.0.	

MALSR	MISSED APPROACH: (Do not exceed 185K until HRNTT) Climb to 3000 on the RNAV missed approach route to SLOTT and hold.
-------	--

D-ATIS	REGIONAL APP CON	DFW TOWER	GND CON	CLNC DEL	CPDLC
ARR 123.775	133.15 118.1	126.55 127.5 EAST	121.65 121.8 EAST	128.25	
DEP 135.925		124.15 134.9 WEST	121.85 WEST		



SC-2, 31 DEC 2020 to 28 JAN 2021

SC-2, 31 DEC 2020 to 28 JAN 2021