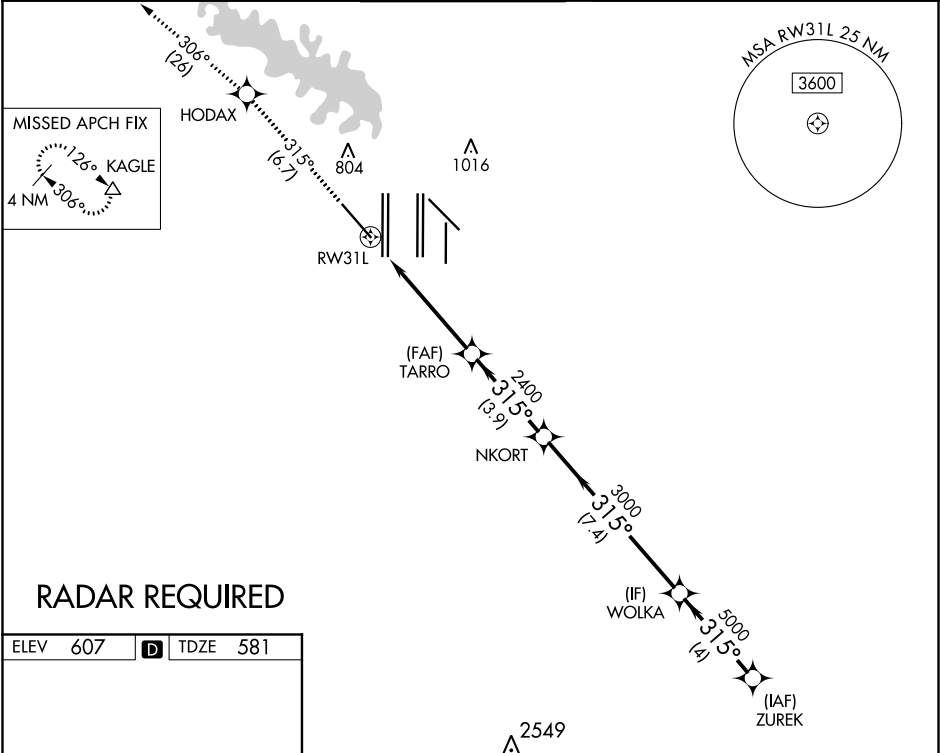
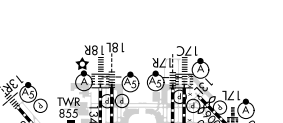


APP CRS 315°	Rwy Idg 9300 TDZE 581 Apt Elev 607	RNAV (RNP) Z RWY 31L	
		DALLAS-FORT WORTH INTL (DFW)	

For uncompensated Baro-VNAV systems, procedure NA below -4°C (25°F) or above 54°C (130°F). Simultaneous approach authorized with Rwy 31R. GPS Required. Use of FD or AP providing RNAV track guidance required during simultaneous operations.	MISSED APPROACH: Climb to 3000 on track 315° to HODAX and on track 306° to KAGLE and hold.
--	--

D-ATIS ARR 123.775 DEP 135.925	REGIONAL APP CON 118.425 127.075 119.4	DFW TOWER 126.55 127.5 EAST 124.15 134.9 WEST	GND CON 121.65 121.8 EAST 121.85 WEST	CLNC DEL 128.25	CPDLC
--------------------------------------	---	---	---	--------------------	-------



 <p>315° to RW31L</p>	<p>3000 ↑ tr 315°</p>	<p>HODAX ✦</p>	<p>tr 306° △</p>	<p>KAGLE △</p>	<p>VGSI and RNAV glidepath not coincident (VGSI Angle 3.13/TCH 72).</p>	
	<p>RW31L</p>	<p>TARRO 2400</p>	<p>NKORT</p>	<p>WOLKA</p>	<p>ZUREK</p>	
	<p>5.6 NM</p>	<p>3.9 NM</p>	<p>7.4 NM</p>	<p>4 NM</p>	<p>5000</p>	
	<p>CATEGORY</p>	<p>A</p>	<p>B</p>	<p>C</p>	<p>D</p>	
	<p>RNP 0.30 DA</p>	<p>951/60</p>		<p>370 (400-1¼)</p>		
<p>AUTHORIZATION REQUIRED</p>						