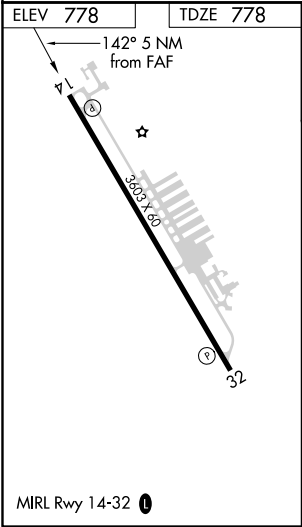
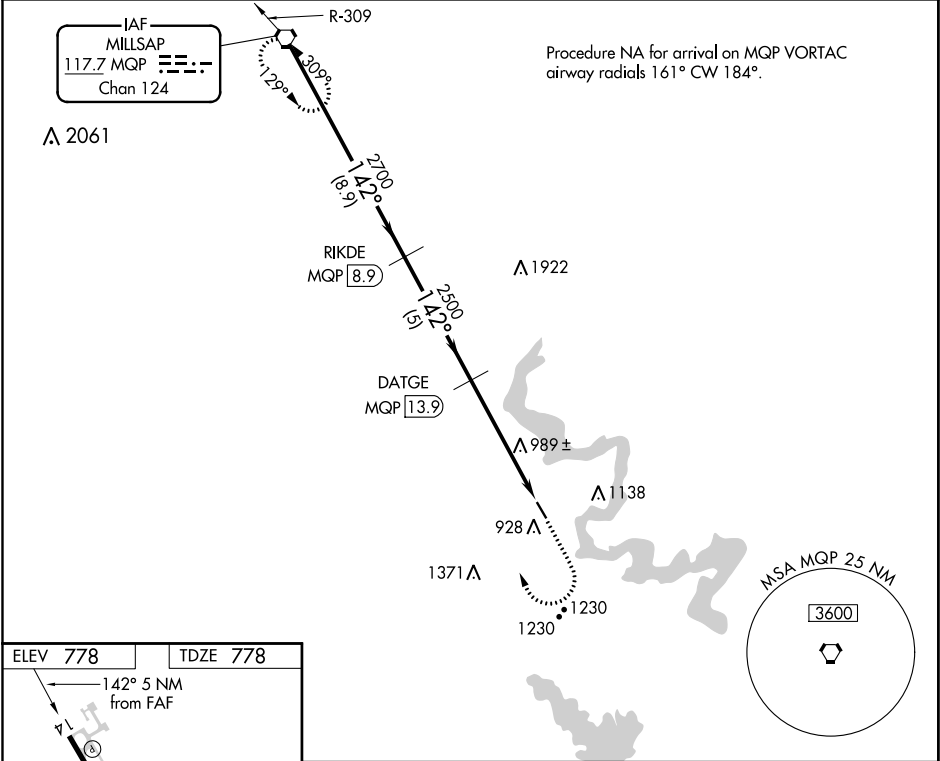


VORTAC MQP	APP CRS	Rwy Idg	3603
117.7	142°	TDZE	778
Chan 124		Apt Elev	778

VOR/DME RWY 14
GRANBURY RGNL (GDJ)

<p>▼ Use Fort Worth Meacham Intl altimeter setting. Night Landing: ▲ NA Rwy 14 NA. Helicopter visibility reduction below 1 SM NA.</p>	MISSED APPROACH: Climb to 2000, then climbing right turn to 3000 direct MQP VORTAC and hold.
---	---

AWOS-3 118.925	FORT WORTH CENTER 127.15 314.0	UNICOM 123.0 (CTAF) 0
-------------------	-----------------------------------	--------------------------



VGSi and descent angles not coincident (VGSi angle 3.00/TCH 30).				2000	3000	MQP
MQP VORTAC				↑	↷	0
3000				142°		
Procedure Turn NA				2700		
RIKDE MQP 8.9						
DATGE MQP 13.9						
2500				3.18°	TCH 40	MQP 18.9
8.9 NM				5 NM	5 NM	
CATEGORY	A	B	C	D		
S-14	1400-1	622 (700-1)	1400-1¾ 622 (700-1¾)	NA		
CIRCLING	1420-1 642 (700-1)	1440-1 662 (700-1)	1440-1¾ 662 (700-1¾)	NA		