

NDB ATA 347	APP CRS 053°	Rwy ldg 3800
		TDZE 280
		Apt Elev 280

NDB RWY 5

HALL-MILLER MUNI (ATA)

▼

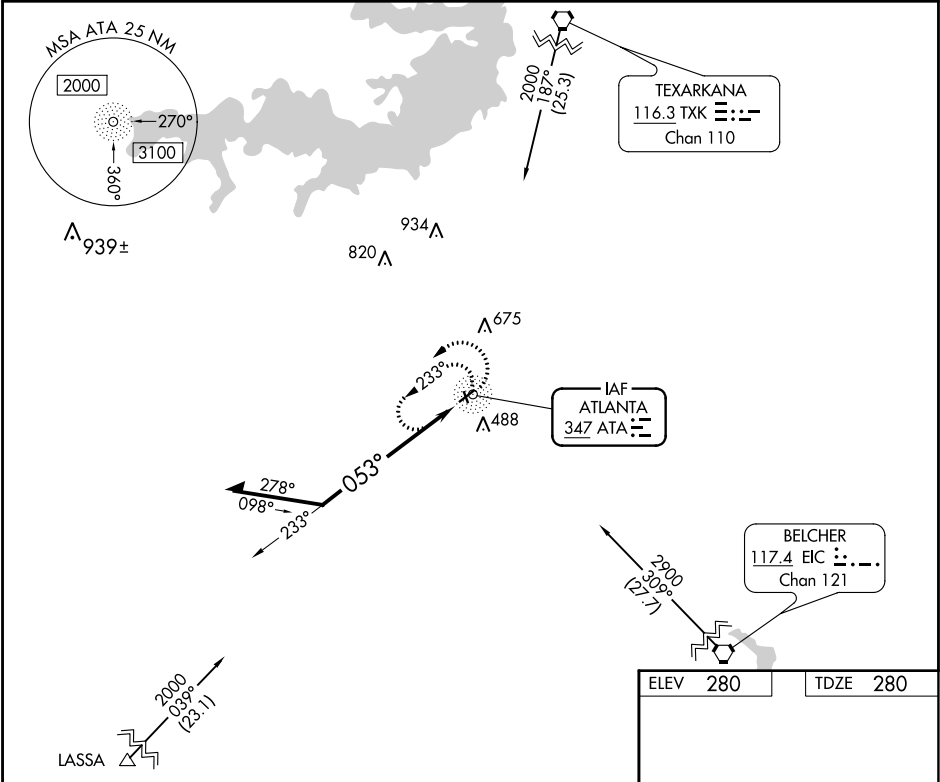
NA

Helicopter visibility reduction below 1 SM NA. Use Texarkana altimeter setting, when not received use Mount Pleasant altimeter setting and increase all MDA 40 feet and all Cat B visibility ¼ mile. Procedure NA at night.

MISSED APPROACH:

Climbing left turn to 2000 in ATA NDB holding pattern.

TXK ASOS 120.2	FORT WORTH CENTER 123.925 269.475	CTAF 122.9 0
--------------------------	---	------------------------



Remain within 10 NM

ATA NDB

2000

233°

053°

2000

ATA

CATEGORY	A	B	C	D
S-5	1 220-1¼	940 (1000-1¼)	NA	
CIRCLING	1 220-1¼	940 (1000-1¼)	NA	

ELEV 280

TDZE 280

3600 X 60

266 X 75

0.3% UP

0.5% UP

053° to ATA NDB

MIRL Rwy 5-23 0

REIL Rws 5 and 23 0

SC-2, 31 DEC 2020 to 28 JAN 2021

SC-2, 31 DEC 2020 to 28 JAN 2021