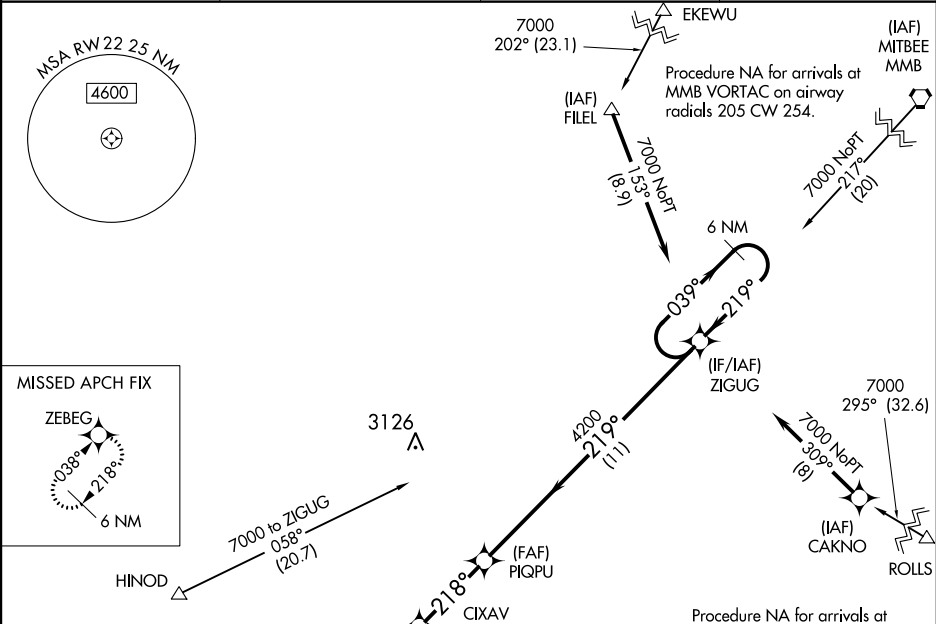


WAAS CH <b>48837</b> <b>W22A</b>	APP CRS <b>218°</b>	Rwy Idg TDZE <b>2382</b> Apt Elev <b>2396</b>
--	------------------------	---

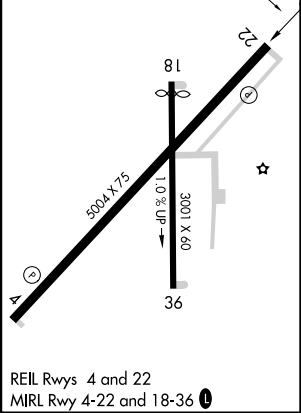
**RNAV (GPS) RWY 22**  
HEMPHILL COUNTY (HHF')

<p><b>⚠</b> DME/DME RNP-0.3 NA. When local altimeter setting not received, use Gage altimeter setting and increase all MDA 120 feet, increase LP and LNAV visibility Cat C and D ¾ mile and Circling Cat C ½ mile. Helicopter visibility reduction below ¾ SM NA. Circling Rwy 18, 36 NA at night.</p>	<p><b>MISSED APPROACH:</b> Climb to 7000 direct ZEBEG and hold, continue climb-in-hold to 7000.</p>
--	---

AWOS-3 <b>119.025</b>	ALBUQUERQUE CENTER <b>127.85 285.475</b>	KANSAS CITY CENTER <b>126.95 379.2</b>	CTAF <b>122.9</b> <b>0</b>
--------------------------	---	---	-------------------------------



ELEV 2396	TDZE 2382
-----------	-----------



7000

↑

ZEBEG

CIXAV

2.3 NM to RW22

PIQPU

3.00°

TCH 35

ZIGUG

6 NM Holding Pattern

039°

→

←

219°

7000

RW22

218°

3140

219°

4200

2.3 NM

3.3 NM

11 NM

CATEGORY	A	B	C	D
LP MDA	2800-1	418 (500-1)	2800-1½	418 (500-1½)
LNAV MDA	2860-1	478 (500-1)	2860-1¾	478 (500-1¾)
CIRCLING	3040-1	644 (700-1)	3280-2¾ 884 (900-2¾)	3340-3 944 (1000-3)