

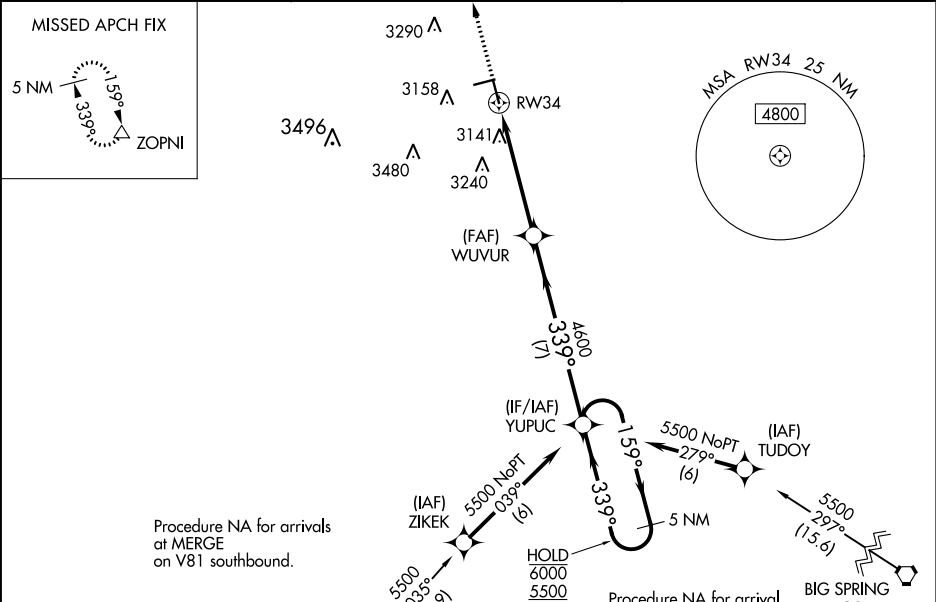
WAAS CH 56626 W34A	APP CRS 339°	Rwy Idg TDZE 2994 Apt Elev 2999
--	------------------------	---

RNAV (GPS) RWY 34

LAMESA MUNI (LUV)

RNP APCH. <div><div>⚠</div><div>Circling Rwy 7, 25 NA at night. For uncompensated Baro-VNAV systems, LNAV/VNAV NA below -20°C or above 54°C.</div></div>	MISSED APPROACH: Climb to 5500 direct ZOPNI and hold.
---	---

AWOS-3PT 124.175	FORT WORTH CENTER 132.6 269.05	UNICOM 122.8 (CTAF)
----------------------------	--	-------------------------------



ELEV 2999

TDZE 2994

91

55

4006 X 60

5002 X 75

34

339° to RW34

☆

Ⓟ

MIRL Rwy 7-25 and 16-34

MERGE

(15.0)

5500

ZOPNI

↑

VGSI and RNAV glidepath not coincident (VGSI Angle 3.00/TCH 32).

*LNAV only.

1.3 NM

3.6 NM

7 NM

1.3 NM to RW34

4600

339°

159°

339°

6000

5500

GP 3.00°

TCH 45

YUPUC

5 NM Holding Pattern

CATEGORY	A	B	C	D
LPV DA	3194-¾ 200 (200-¾)			
LNAV/VNAV DA	3244-¾ 250 (300-¾)			
LNAV MDA	3420-1	426 (500-1)	3420-1¼	426 (500-1¼)
<div><div></div>CIRCLING</div>	3460-1	461 (500-1)	3700-2 701 (800-2)	3840-2¾ 841 (900-2¾)

BGS VORTAC

airway radials 227 CW 334.