

WAAS CH <b>81999</b> <b>W35A</b>	APP CRS <b>356°</b>	Rwy Idg <b>5006</b> TDZE <b>472</b> Apt Elev <b>474</b>
--	------------------------	---

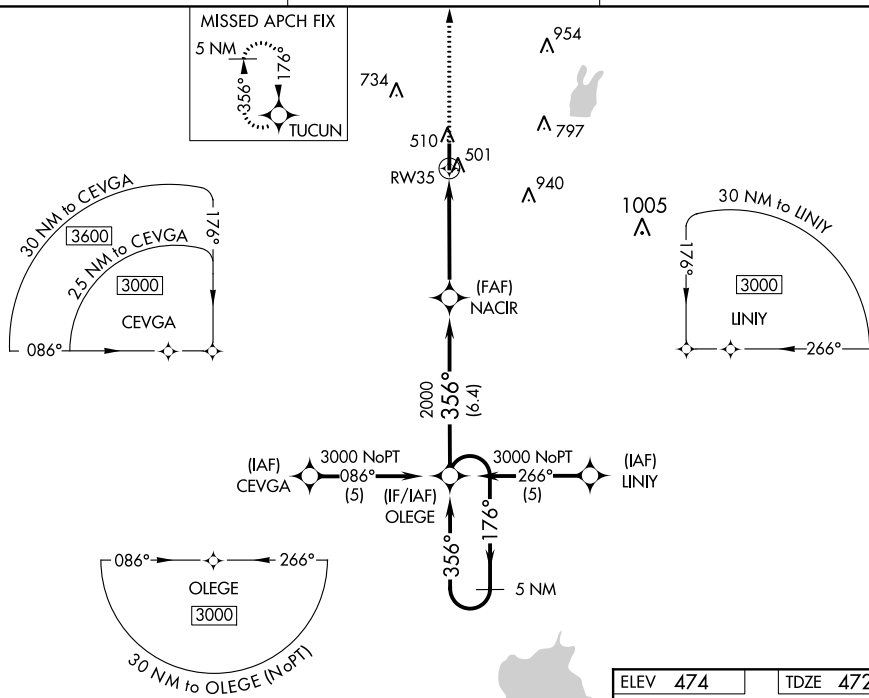
RNAV (GPS) RWY 35  
TERRELL MUNI (TRL)

Baro-VNAV and VDP NA when using Dallas-Love Field altimeter setting. For uncompensated Baro-VNAV systems, INAV/VNAV NA below -7°C (20°F) or above 54°C (130°F). DME/DME RNP-0.3 NA. When local altimeter setting not received, use Dallas-Love Field altimeter setting and increase all DA 73 feet and all MDA 80 feet; increase LPV all Cats, INAV/VNAV all Cats, INAV Cat C and Circling Cat C visibility ¼ mile. Helicopter visibility reduction below ¼ SM NA.

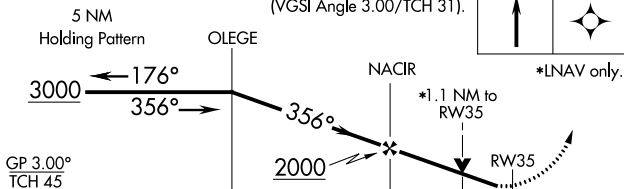
**MISSED APPROACH:**  
Climb to 3000 direct  
TUCUN and hold.

ASOS  
119.275

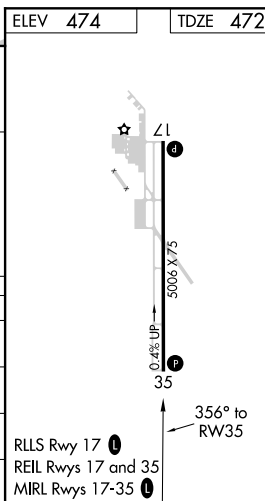
FORT WORTH CENTER  
132.025 360.75

UNICOM  
122.8 (CTAF) **L**

VGSI and RNAV glidepath not coincident  
(VGSI Angle 3.00/TCH 31).



CATEGORY	A	B	C	D
LPV DA	730-7 $\frac{7}{8}$ 258 (300-7 $\frac{7}{8}$ )			NA
LNAV/ VNAV DA	801-1 $\frac{1}{8}$ 329 (400-1 $\frac{1}{8}$ )			NA
LNAV MDA	820-1 348 (400-1)			NA
CIRCLING	980-1 506 (600-1)	1020-1 546 (600-1)	1020-1 $\frac{1}{2}$ 546 (600-1 $\frac{1}{2}$ )	NA



TERRELL, TEXAS  
Orig-A 26MAY16

32°43'N-96°16'W

TERRELL MUNI (TRL)  
RNAV (GPS) RWY 35