

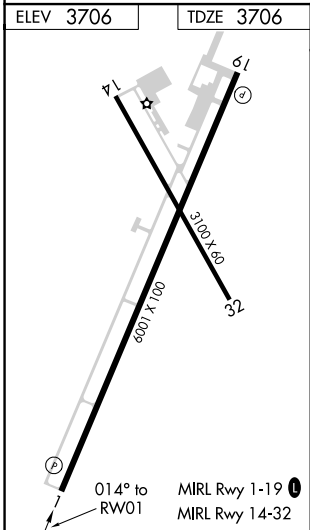
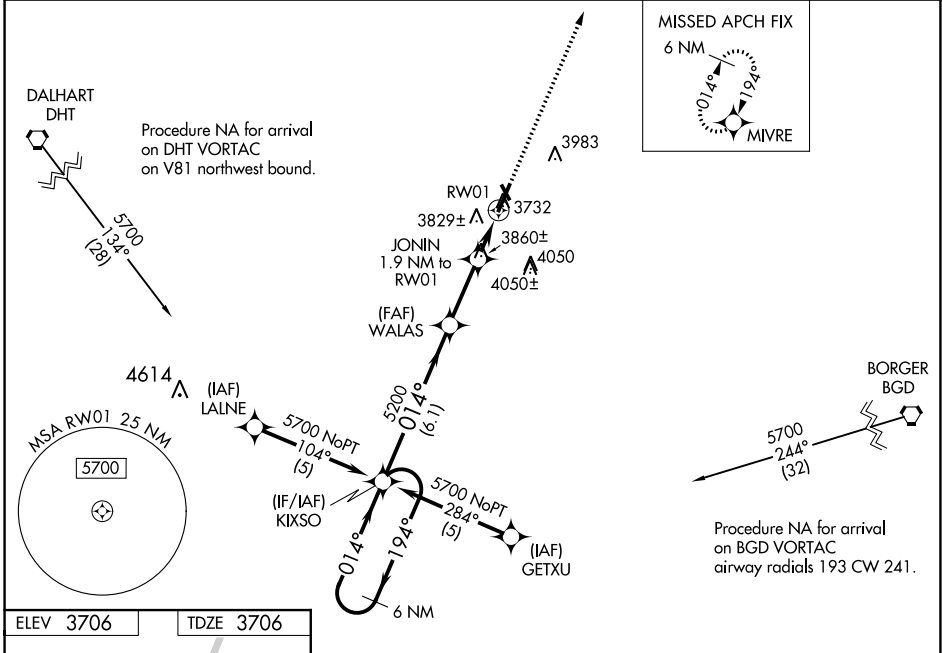
WAAS CH 63016 W01A	APP CRS 014°	Rwy Idg TDZE 3706 Apt Elev 3706
--	------------------------	---

RNAV (GPS) RWY 1
MOORE COUNTY (DUX)

⚠ Baro-VNAV NA when using Dalhart altimeter setting. For uncompensated Baro-VNAV systems, LNAV/VNAV NA below -22°C (-7°F) or above 41°C (105°F). DME/DME RNP-0.3 NA. When local altimeter setting not received, use Dalhart altimeter setting and increase DA 104 feet and all MDA 120 feet, increase LNAV/VNAV all Cats, LNAV Cats C and D and Circling Cat C and D visibility ¼ mile. VDP NA with Dalhart altimeter setting. Night landing: Rwy 14, 32 NA.

MISSED APPROACH:
Climb to 5700 direct to MIVRE and hold.

AWOS-3 118.075	ALBUQUERQUE CENTER 127.85 285.475	UNICOM 122.8 (CTAF) 0
--------------------------	---	---------------------------------



6 NM Holding Pattern		KIXSO	WALAS	JONIN 1.9 NM to RW01	RW01
5700		194°	014°	5200	4360
GP 3.00° TCH 50		6.1 NM	2.6 NM	0.6	1.3
CATEGORY	A	B	C	D	
LPV DA	3906-1		200 (200-1)		
LNAV/VNAV DA	4132-1½		426 (500-1½)		
LNAV MDA	4160-1	454 (500-1)	4160-1¼ 454 (500-1¼)	4160-1½ 454 (500-1½)	
CIRCLING	4160-1 454 (500-1)	4220-1 514 (600-1)	4220-1½ 514 (600-1½)	4300-2 594 (600-2)	