

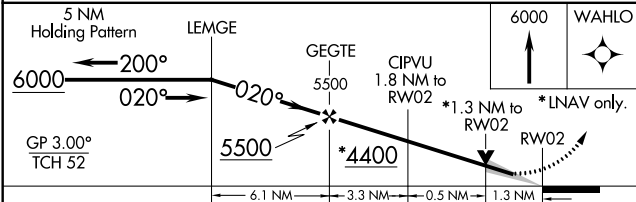
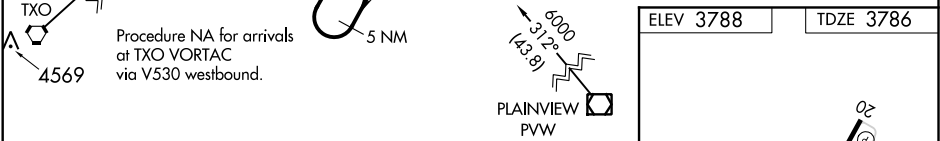
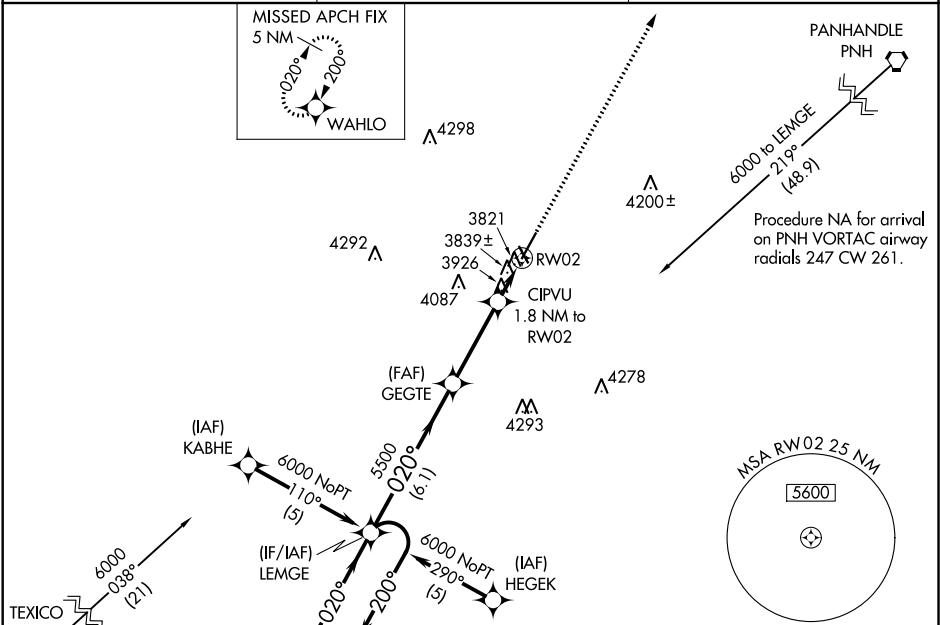
WAAS CH 50416 W02A	APP CRS 020°	Rwy Idg 6100 TDZE 3786 Apt Elev 3788
--	------------------------	---

RNAV (GPS) RWY 2
HEREFORD MUNI (HR.X)

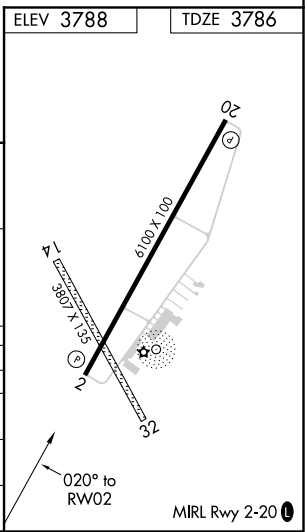
▼ For uncompensated Baro-VNAV systems, LNAV/VNAV NA below -22°C (-7°F) or above 41°C (105°F).
▲ DME/DME RNP-0.3 NA. When local altimeter setting not received, use Amarillo Intl altimeter setting and increase all DA 112 feet and all MDA 120 feet, increase LPV all Cats, LNAV/VNAV all Cats, LNAV Cats C and D, and Circling Cats C and D visibility ¼ mile. Baro-VNAV NA when using Amarillo Intl altimeter setting. VDP NA with Amarillo Intl altimeter setting.

MISSED APPROACH: Climb to 6000 direct WAHLO and hold.

AWOS-3 118.05	AMARILLO APP CON★ 119.5 307.0	UNICOM 122.8 (CTAF) 0
-------------------------	---	---------------------------------



CATEGORY	A	B	C	D
LPV DA	3986-3/4 200 (200-3/4)			
LNAV/VNAV DA	4126-1 3/4 340 (400-1 1/4)			
LNAV MDA	4240-1	454 (500-1)	4240-1 1/4 454 (500-1 1/4)	4240-1 1/2 454 (500-1 1/2)
CIRCLING	4280-1	492 (500-1)	4280-1 1/2 492 (500-1 1/2)	4340-2 552 (600-2)



SC-2, 31 DEC 2020 to 28 JAN 2021

SC-2, 31 DEC 2020 to 28 JAN 2021