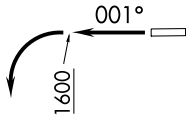


SC-2, 31 DEC 2020 to 28 JAN 2021

CTAF
122.7
REGIONAL DEP CON
135.975 379.9

TOP ALTITUDE:
ASSIGNED BY ATC

TAKEOFF MINIMUMS
Rwys 17, 35: Standard.



NOTE: Chart not to scale.

- NOTE: RADAR required.
- NOTE: RNAV 1.
- NOTE: DME/DME/IRU or GPS required.
- NOTE: BDDAY transition: ATC assigned only.
- NOTE: MRSSH transition: For aircraft inbound to Shreveport, Jackson and Monroe terminal area airports only.

(NARRATIVE ON FOLLOWING PAGE)

SC-2, 31 DEC 2020 to 28 JAN 2021