

WAAS CH 87102 W18A	APP CRS 179°	Rwy Idg 7002 TDZE 576 Apt Elev 589
--	------------------------	---

RNAV (GPS) RWY 18
MCKINNEY NATIONAL (TKI)

V DME/DME RNP-0.3 NA. VDP NA with Dallas Love Field altimeter setting. When local
A altimeter setting not received, use Dallas Love Field altimeter setting and increase all
DA 70 feet and all MDA 80 feet, increase LNAV Cats C and D $\frac{1}{2}$ mile, and Circling
Cats C and D visibility $\frac{1}{2}$ mile. For inop MALSR when using Dallas Love Field altimeter
setting increase LPV all Cats visibility to 1 mile.

MALSR



MISSED APPROACH:
Climb to 3000 direct
ONEME and hold.

ASOS 119.925	REGIONAL APP CON 124.3 282.275	MC KINNEY TOWER ★ 118.825 (CTAF) 0	GND CON 121.875	CNLC DEL 121.35 (When twr closed)	UNICOM 122.95
------------------------	--	---	---------------------------	--	-------------------------

RADAR REQUIRED

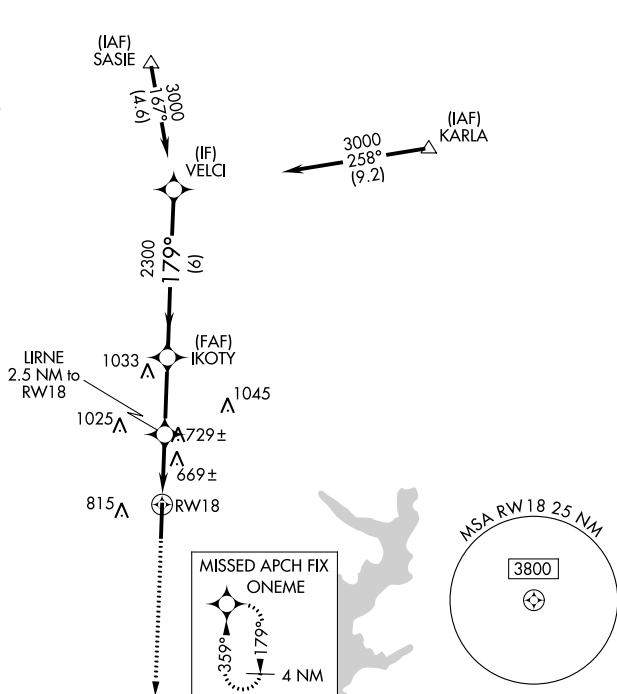
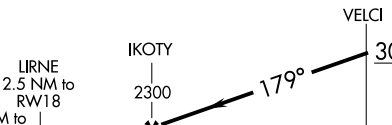


Diagram illustrating the HIRL Rwy 18-36. The diagram shows the runway layout with various markers and elevations. Key features include:

- ELEV 589** and **TDZE 576** at the top.
- A bearing of **179° to RW18** pointing to a marker.
- A marker labeled **A5** with a distance of **81**.
- A marker labeled **D**.
- A marker labeled **P**.
- A marker labeled **A4** with a distance of **36**.
- A marker labeled **TWR 620** with a distance of **7002 X 150**.

3000 ↑ ONEME ✦					
*LNAV only.		GP 3.00° TCH 50			
CATEGORY	A	B	C	D	
LPV DA	776-½ 200 (200-½)				
LNAV MDA	920-½ 344 (400-½)		920-⅝ 344 (400-⅝)		
C CIRCLING	1040-1 451 (500-1)	1120-1 531 (600-1)	1200-⅜ 611 (700-⅜)	1380-2½ 791 (800-2½)	