

WAAS CH 49202 W36A	APP CRS 359°	Rwy Idg 7002 TDZE 589 Apt Elev 589
--	------------------------	---

RNAV (GPS) RWY 36
MCKINNEY NATIONAL (TKI)

⚠ For uncompensated Baro-VNAV systems, LNAV/VNAV NA below -8°C (18°F) or above 54°C (130°F). When local altimeter setting not received, use Dallas Love Field altimeter setting and increase all DA 70 feet and all MDA 80 feet, and increase LNAV/VNAV all Cats visibility ½ mile, LNAV Cat C/D and Circling Cat C/D visibility ¼ mile. DME/DME RNP-0.3 NA. VDP and Baro-VNAV NA when using Dallas Love Field altimeter setting. For inop MALS increase LNAV/VNAV all Cats visibility to ½ mile and LNAV Cat D visibility to 1 mile. For inop MALS when using Dallas Love Field altimeter setting increase LPV all Cats visibility to ½ mile, LNAV/VNAV Cat D visibility to 1½ mile, and LNAV Cat D visibility to 1¼ mile. Inop table does not apply to LPV all Cats.

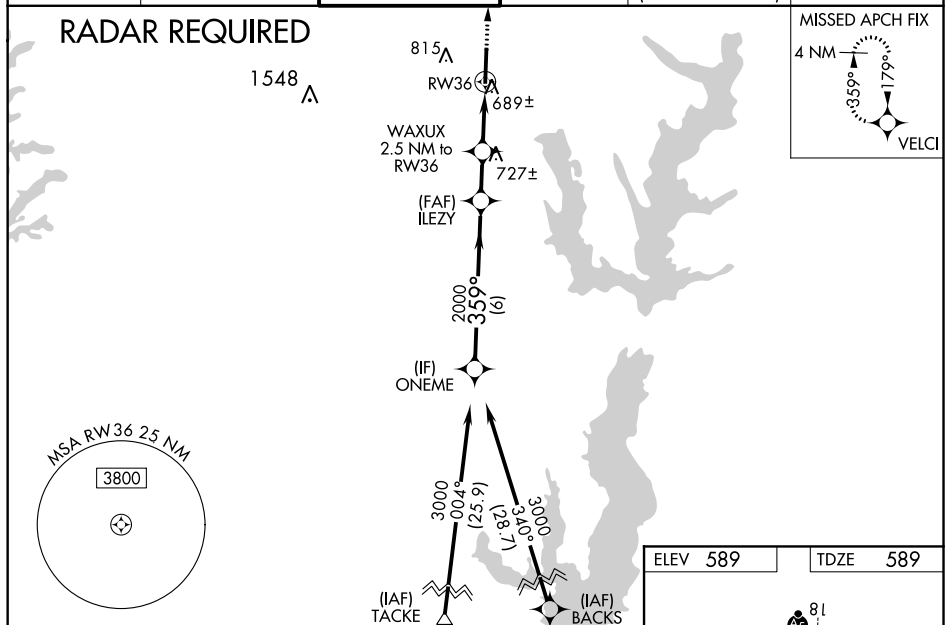
MALS



MISSED APPROACH:
Climb to 3000 direct
VELCI and hold.

ASOS 119.925	REGIONAL APP CON 124.3 282.275	MC KINNEY TOWER ★ 118.825 (CTAF) 0	GND CON 121.875	CINC DEL 121.35 (When twr closed)	UNICOM 122.95
------------------------	--	---	---------------------------	--	-------------------------

RADAR REQUIRED



ELEV 589		TDZE 589
----------	--	----------

