

LOC I-JZW 110.95	APP CRS 353°	Rwy Idg TDZE Apt Elev 6002 697 700
----------------------------	------------------------	--

ILS or LOC RWY 35L

FORT WORTH SPINKS (FWS)

RADAR required for procedure entry.

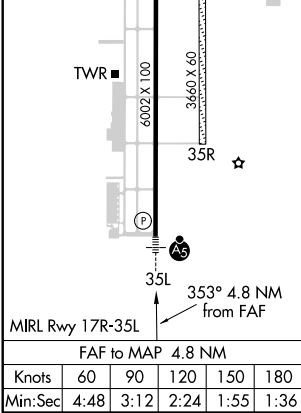
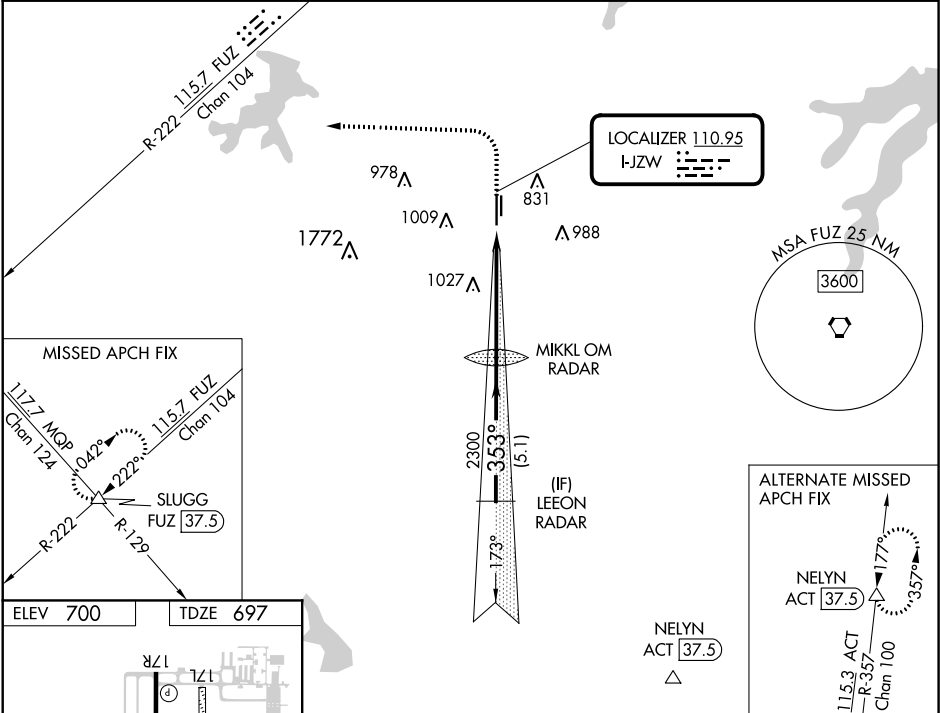
NA

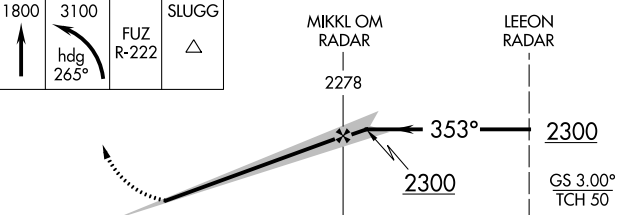
Circling NA west of Rwy 17R-35L.
For inop ALS increase S-LOC 35L Cat C/D visibility to 1¾ SM.

MALSR

MISSED APPROACH: Climb to 1800 then climbing left turn to 3100 on heading 265° and FUZ VORTAC R-222 to SLUGG INT/ FUZ 37.5 DME and hold.

ATIS 120.025	REGIONAL APP CON 135.975 379.9	SPINKS TOWER ★ 124.625 (CTAF) 0	GND CON 119.475	UNICOM 122.7
------------------------	--	--	---------------------------	------------------------



1800 ↑	3100 hdg 265°	FUZ R-222	SLUGG △				
CATEGORY				A	B	C	D
S-ILS 35L		897-½ 200 (200-½)					
S-LOC 35L		1320-½ 623 (700-½)		1320-1¾ 623 (700-1¾)			
CIRCLING		1320-1 620 (700-1)		1320-1¾ 620 (700-1¾)		1320-2 620 (700-2)	