

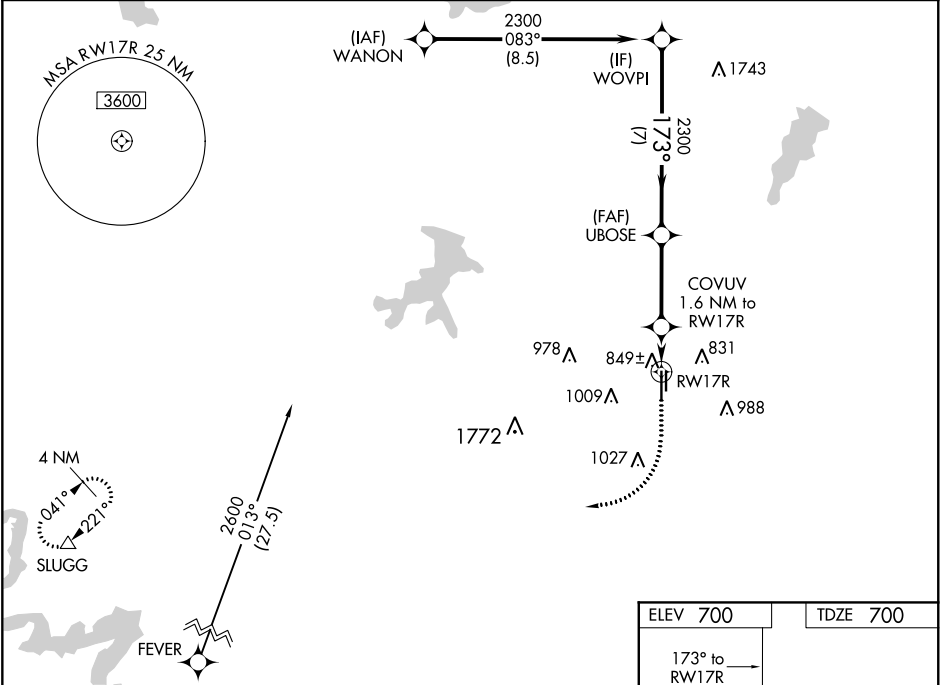
WAAS CH 62899 W17A	APP CRS 173°	Rwy Idg 6002 TDZE 700 Apt Elev 700	RNAV (GPS) RWY 17R FORT WORTH SPINKS (FWS)
--	------------------------	---	--

⚠

Baro-VNAV NA when using Fort Worth Meacham altimeter setting. For uncompensated Baro-VNAV systems, LNAV/VNAV NA below -16°C (4°F) or above 39°C (102°F). Circling NA west of Rwy 17R-35L DME/DME RNP-0.3 NA. Helicopter visibility reduction below ¾ SM NA. When local altimeter setting not received, use Fort Worth Meacham altimeter setting and increase all DA 37 feet and all MDA 40 feet, increase LPV all Cats visibility, LNAV/VNAV all Cats visibility and LNAV Cats C/D visibility ½ mile.

MISSED APPROACH:
Climb to 1600 then climbing right turn to 3100 direct SLUGG and hold.

ATIS 120.025	REGIONAL APP CON 135.975 379.9	SPINKS TOWER ★ 124.625 (CTAF) 0	GND CON 119.475	UNICOM 122.7
------------------------	--	--	---------------------------	------------------------



VGSI and RNAV glidepath not coincident (VGSI Angle 3.00/TCH 40).

1600 3100 SLUGG

↑ ↪ △

COVUV 1.6 NM to RW17R *LNAV only.

WOWPI 2300 173° 2300 2300

GP 3.00° TCH 40

7 NM 3.3 NM 1.6

*1240 RW17R

CATEGORY	A	B	C	D
LPV DA	950-7/8 250 (300-7/8)			
LNAV/VNAV DA	1030-1 1/8 330 (400-1 1/8)			
LNAV MDA	1100-1 400 (400-1)	1100-1 1/8 400 (400-1 1/8)		
CIRCLING	1200-1 500 (500-1)	1200-1 1/2 500 (500-1 1/2)	1260-2 560 (600-2)	

ELEV 700 TDZE 700

173° to RW17R

TWR 6002 X 100 3600 X 60 35R 35L

MIRL Rwy 17R-35L