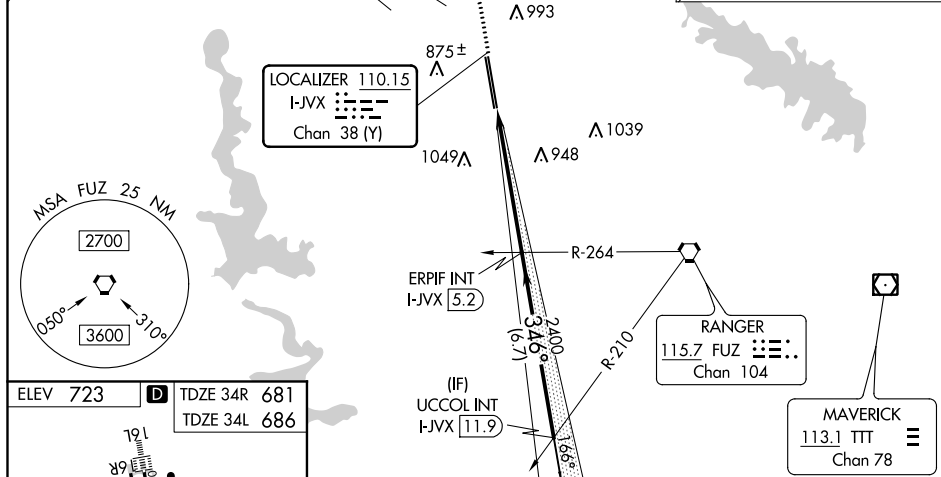


ILS or LOC RWY 34R

MALSR

MISSED APPROACH: Climb to 1200 then climbing left turn to 3000 on heading 270° and FUZ VORTAC R-303 to OBLON INT/FUZ 24 DME and hold.

RADAR REQUIRED



1200 ↑	3000 hdg 270°	FUZ R-303	OBLON △	ERPIF INT I-JVX 5.2	UCCOL INT I-JVX 11.9
<p>*LOC only.</p>					
CATEGORY	A	B	C	D	E
S-ILS 34R	881/18 200 (200-½)				
S-LOC 34R	1240/24	559 (600-½)	1240/60	559 (600-1¼)	
SIDESTEP 34L	1240-1	554 (600-1)	1240-1½ 554 (600-1½)	1240-2	554 (600-2)
C CIRCLING	1240-1 517 (600-1)	1320-1 597 (600-1)	1360-1¾ 637 (700-1¼)	1380-2 657 (700-2)	1380-2¼ 657 (700-2¼)

SC-2, 31 DEC 2020 to 28 JAN 2021