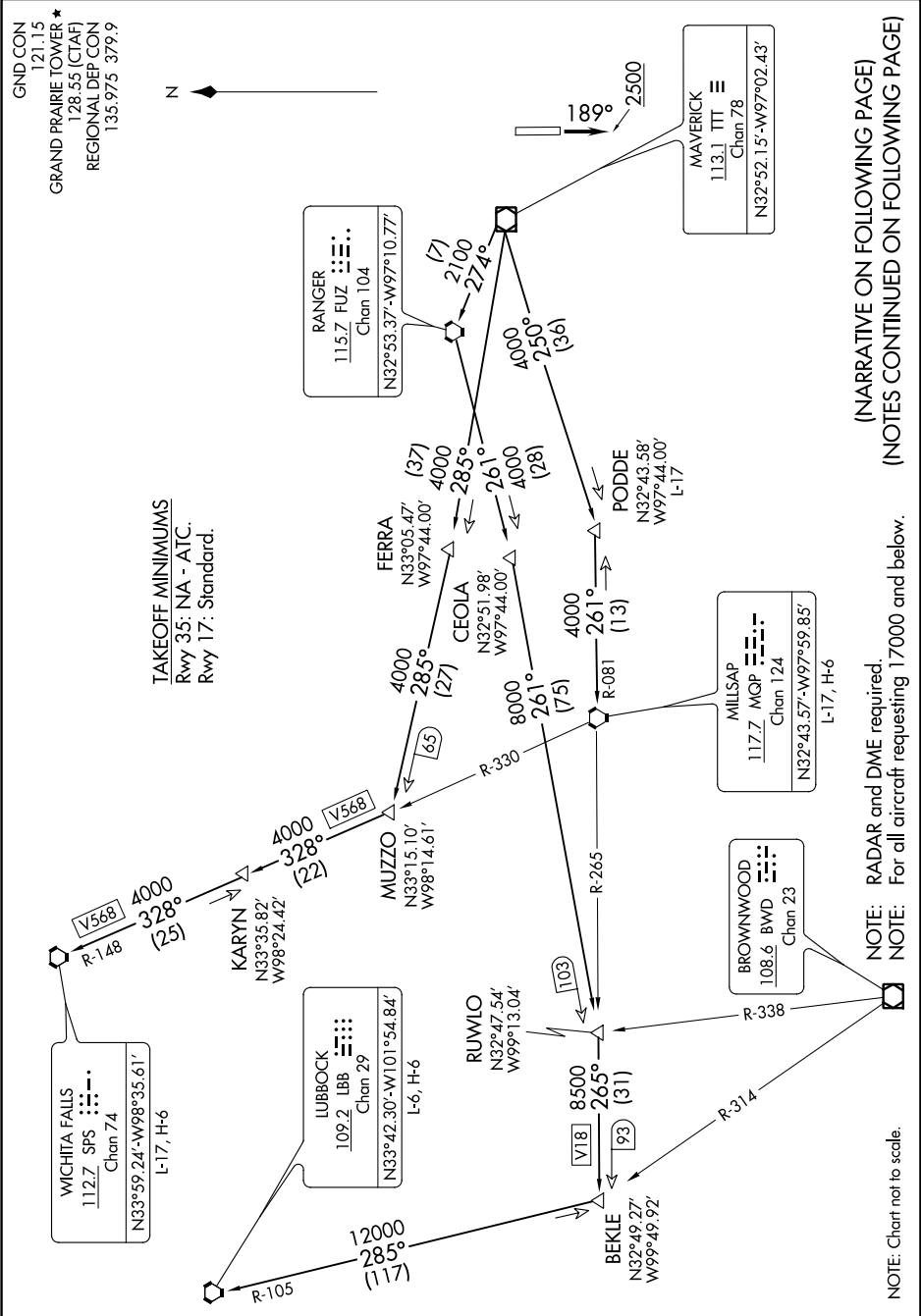


SC-2, 31 DEC 2020 to 28 JAN 2021



(NARRATIVE ON FOLLOWING PAGE)  
(NOTES CONTINUED ON FOLLOWING PAGE)

NOTE: RADAR and DME required.  
NOTE: For all aircraft requesting 17000 and below.

NOTE: Chart not to scale.

SC-2, 31 DEC 2020 to 28 JAN 2021