

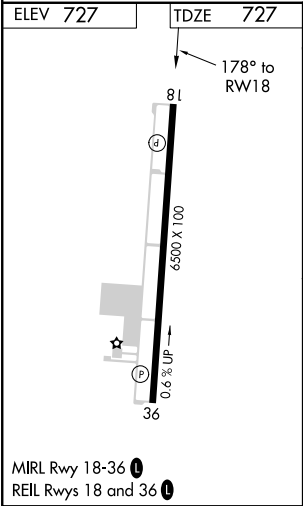
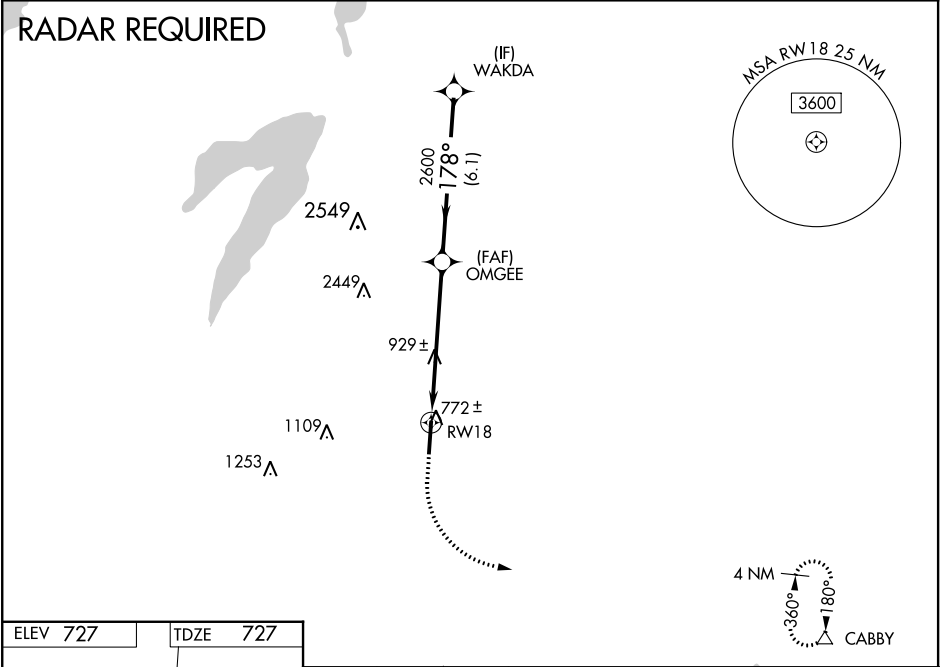
WAAS CH 62920 W18A	APP CRS 178°	Rwy ldg TDZE 727 Apt Elev 727	6500
--	------------------------	---	-------------

RNAV (GPS) RWY 18
MID-WAY RGNL (JWY)

⚠ Baro-VNAV NA when using Dallas Love Field altimeter setting. For uncompensated Baro-VNAV systems, LNAV/VNAV NA below -16°C (4°F) or above 39°C (102°F).
⚠ DME/DME RNP-0.3 NA. VDP NA with Dallas Love Field altimeter setting. When local altimeter setting not received, use Dallas Love Field altimeter setting and increase all DA 88 feet and all MDA 100 feet, increase LPV and LNAV/VNAV visibility ¼ mile all Cats, LNAV Cats C and D ⅓ mile, and Circling Cat D visibility ¼ mile.

MISSED APPROACH: Climb to 1300 then climbing left turn to 3000 direct CABBY and hold.

AWOS-3 119.575	REGIONAL APP CON 125.2 343.65	UNICOM 122.975 (CTAF) 0
--------------------------	---	-----------------------------------



1300	3000	CABBY		
↑	↷	△		
*LNAV only.				
<p>The diagram shows a flight path starting from RW18, proceeding to OMGEE (2600), and then to WAKDA (3000). The distance from RW18 to OMGEE is 1.4 NM, and from OMGEE to WAKDA is 4.4 NM. The total distance is 5.8 NM. The angle at OMGEE is 178°. The path is labeled with altitudes 2600 and 3000. A GP 3.00° TCH 40 is indicated.</p>				
CATEGORY	A	B	C	D
LPV DA	927-¾ 200 (200-¾)			
LNAV/VNAV DA	977-⅞ 250 (300-⅞)			
LNAV MDA	1220-1	493 (500-1)	1220-1⅓	493 (500-1⅓)
CIRCLING	1220-1	493 (500-1)	1220-1½ 493 (500-1½)	1300-2 573 (600-2)

SC-2, 31 DEC 2020 to 28 JAN 2021

SC-2, 31 DEC 2020 to 28 JAN 2021