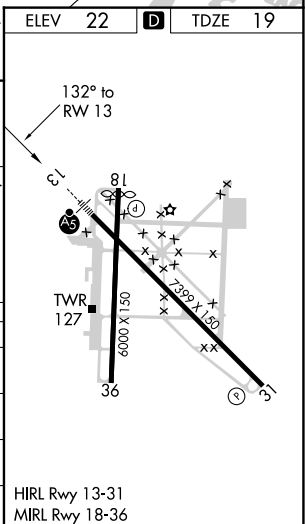



RNAV (GPS) RWY 13
BROWNSVILLE/SOUTH PADRE ISLAND INTL (BRO)

MISSED APPROACH:
Climb to 500 then
climbing left turn to
2000 direct FIRTA
and hold.

UNICOM
122.95

CATEGORY	A	B	C	D
LPV DA **	219/24		200 (200-1/2)	
LNAV/ VNAV DA	373/30		354 (400-5%)	
LNAV MDA	480/24	461 (500-1/2)	480/50	461 (500-1)
 CIRCLING	480-1 458 (500-1)	540-1 518 (600-1)	540-1 1/2 518 (600-1 1/2)	680-2 658 (700-2)