
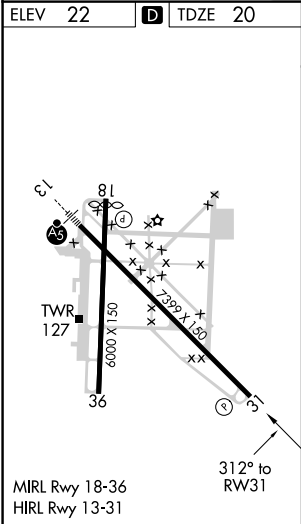
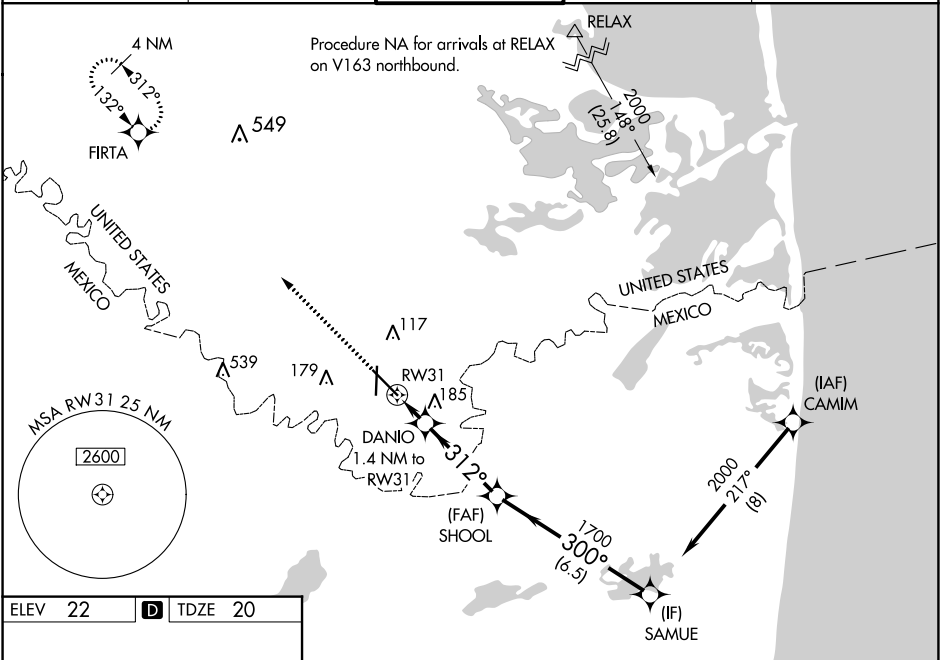




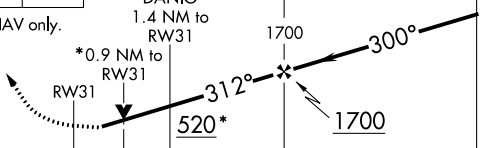

WAAS CH 65843 W31A	APP CRS 312°	Rwy Idg TDZE Apt Elev	7399 20 22
--	------------------------	-----------------------------	---------------------------------------

RNAV (GPS) RWY 31
BROWNSVILLE/SOUTH PADRE ISLAND INTL (BRO)

RNP APCH.		MISSED APPROACH: Climb to 2000 direct FIRTA and hold.	
 Circling Rwy 18 NA at night. Rwy 31 helicopter visibility reduction below 3/4 SM NA. For uncompensated Baro-VNAV systems, LNAV/VNAV NA below 2° C or above 54° C.			

ATIS 128.55	VALLEY APP CON 119.5 257.6	BROWNSVILLE TOWER* 118.9(CTAF) 239.3	GND CON 121.9	UNICOM 122.95
-----------------------	--------------------------------------	---	-------------------------	-------------------------



2000	FIRTA	VGSI and RNAV glidepath not coincident (VGSI Angle 3.00/TCH 68).			
 					
*LNAV only.		DANIO 1.4 NM to RW31	SHOO 1700	SAMUE <u>2000</u>	
		*0.9 NM to RW31	312°	300°	<u>GP 3.00°</u> <u>TCH 60</u>
		<u>520*</u>	<u>1700</u>		
		0.9 0.5 3.7 NM 6.5 NM			
CATEGORY		A	B	C	D
LPV DA		270- ³ / ₄ 250 (300- ³ / ₄)			
LNAV/ VNAV DA		270- ³ / ₄ 250 (300- ³ / ₄)			
LNAV MDA		380-1 360 (400-1)			
 CIRCLING		440-1 418 (500-1)	500-1 478 (500-1)	500-1½ 478 (500-1½)	680-2 658 (700-2)

SC-3, 31 DEC 2020 to 28 JAN 2021

SC-3, 31 DEC 2020 to 28 JAN 2021