

CORPUS CHRISTI, TEXAS

LOC I-NGP 111.3	APCH CRS 132°	Rwy Idg TDZE Arpt Elev 8002 13 19
---------------------------	-------------------------	---

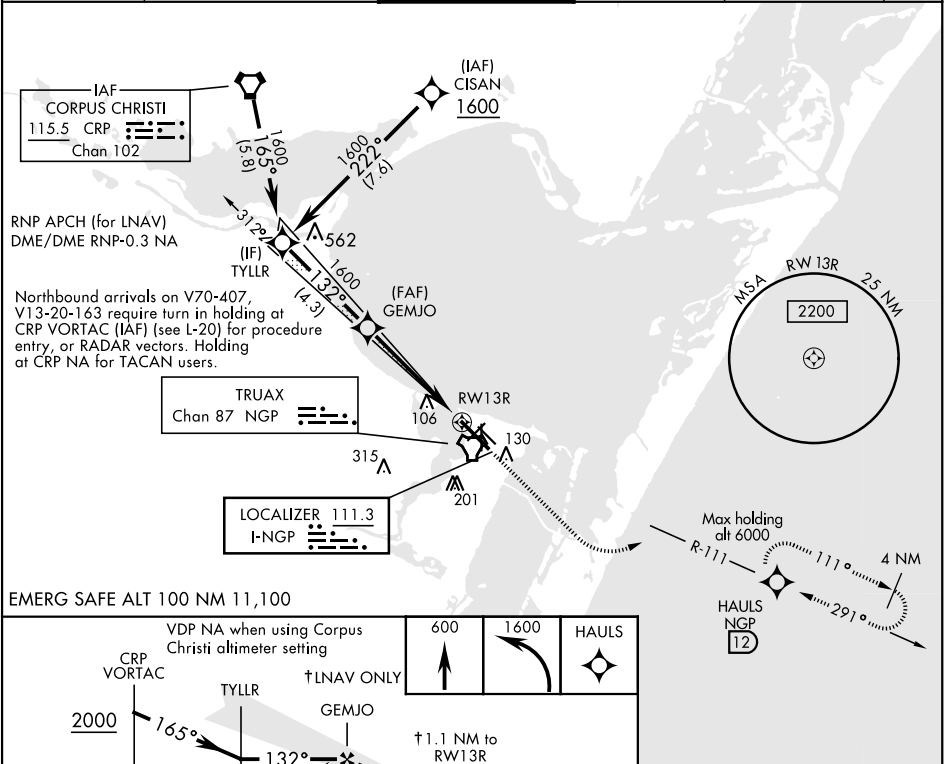
AL-98 [USN]

CORPUS CHRISTI NAS (TRUAX FLD) (KNGP)

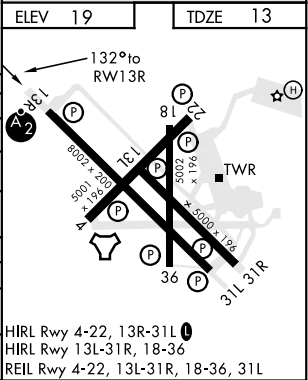
ILS Y or RNAV (GPS) RWY 13R

RNP APCH - DME/DME RNP 0.3 NA for LNAV. RNAV1 - GPS for ILS.	SALSF 	MISSED APPROACH: Climb to 600, then climbing left turn to 1600 direct HAULS and hold.
▼*When ALS inop, increase CAT AB vis to 1 mile; CAT CD vis to 1 1/2 miles. When local altimeter setting not received, use Corpus Christi altimeter setting.		

ATIS★ 127.9 290.9	CORPUS CHRISTI APP CON 128.675 343.75	NAVY CORPUS TOWER★ 134.85 340.2	GND CON 118.7 257.85	CLNC DEL 314.3	ASR/ PAR
-----------------------------	---	---	--------------------------------	--------------------------	-------------



VDP NA when using Corpus Christi altimeter setting				
CRP VORTAC	TYLLR	†LNAV ONLY	600	1600
2000	165°	GEMJO	HAULS	
GS 3.00° TCH 47	1600	132°	†1.1 NM to RW13R	
	1600		4.8 NM	
CATEGORY	A	B	C	D
S-ILS 13R	213-3/4		200	(200-3/4)
LNAV MDA*	400-3/4 387 (400-3/4)		400-7/8 387 (400-7/8)	
CIRCLING	480-1	461 (500-1)	540-1 1/2 521 (600-1 1/2)	620-2 601 (700-2)
CORPUS CHRISTI ALTIMETER SETTING				
S-ILS 13R	242-3/4		232	(300-3/4)
LNAV MDA*	420-3/4 407 (500-3/4)		420-1 407 (500-1)	
CIRCLING	500-1 481 (500-1)	520-1 501 (600-1)	580-1 1/2 561 (600-1 1/2)	660-2 641 (700-2)



CORPUS CHRISTI, TEXAS

27°42'N-97°17'W

CORPUS CHRISTI NAS (TRUAX FLD) (KNGP)

Amdt 1 16JUL20

ILS Y or RNAV (GPS) RWY 13R

SC-3, 31 DEC 2020 to 28 JAN 2021

SC-3, 31 DEC 2020 to 28 JAN 2021