


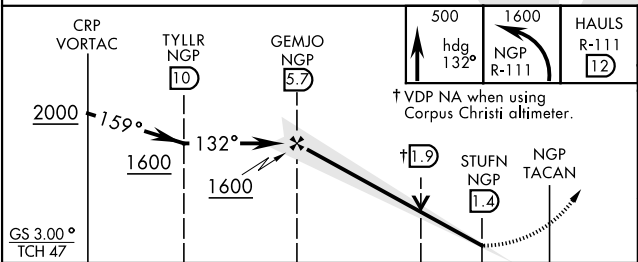
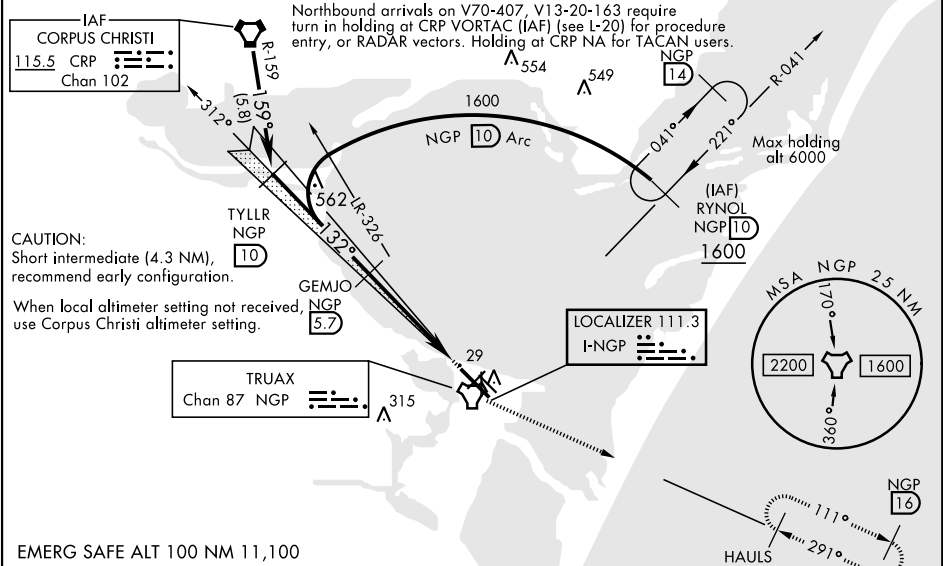
ILS Z or LOC/DME RWY 13R

LOC I-NGP	APCH CRS	Rwy Idg
111.3	132°	8002
	TDZE	13
	Arpt Elev	19

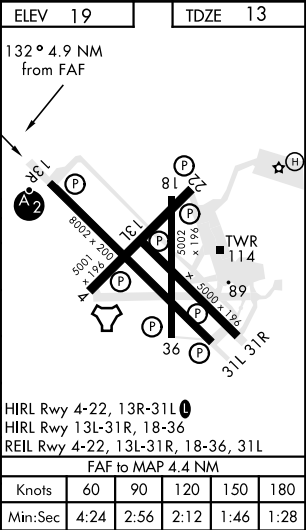
AL-98 [USN]

CORPUS CHRISTI NAS (TRUAX FLD) (KNGP)

DME Required.		SALSF 	MISSED APPROACH: Climb to 500 hdg 132°, then climbing left turn to 1600 and intercept NGP TACAN R-111 to HAULS and hold.			
▼ * When ALS inop, increase vis to 1 mile. ** When ALS inop, increase CAT AB vis to 1 mile, CAT CD to 1 1/8 miles.						
ATIS ★	CORPUS CHRISTI APP CON	NAVY CORPUS TOWER ★	GND CON	CLNC DEL	ASR/ PAR	
127.9 290.9	128.675 343.75	134.85 0 340.2	118.7 257.85	314.3		



CATEGORY	A	B	C	D
S-ILS 13R	213-3/4	200	(200-3/4)	
S-LOC/DME 13R*	380-3/4	367	(400-3/4)	
CIRCLING	480-1 461 (500-1)	540-1 521 (600-1 1/2)	620-2 601 (700-2)	
CORPUS CHRISTI ALTIMETER SETTING				
S-ILS 13R	245-3/4	232	(300-3/4)	
S-LOC/DME 13R**	420-3/4 407 (500-3/4)	420-1 407 (500-1)		
CIRCLING	500-1 481 (500-1)	520-1 501 (600-1)	580-1 561 (600-1 1/2)	660-2 641 (700-2)



ILS Z or LOC/DME RWY 13R

SC-3, 31 DEC 2020 to 28 JAN 2021

SC-3, 31 DEC 2020 to 28 JAN 2021