

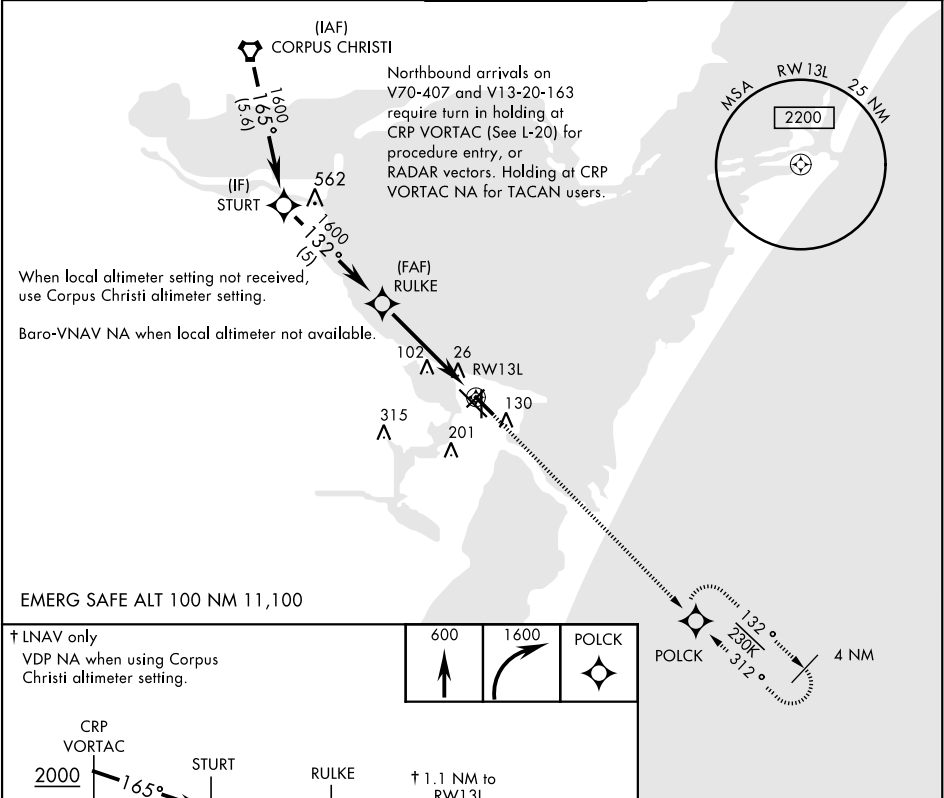
RNAV (GPS) RWY 13L

APCH CRS	Rwy Idg	5000
132°	TDZE	19
	Arpt Elev	19

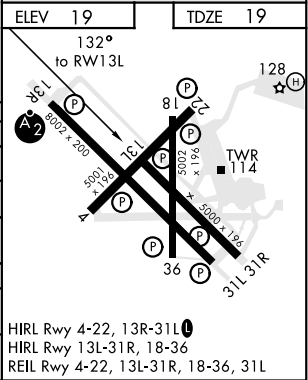
AL-98 [USN]

CORPUS CHRISTI NAS (TRUAX FLD) (KNGP)

RNP APCH - DME/DME RNP-0.3 NA.			MISSED APPROACH: Climb to 600, then climbing right turn to 1600 direct POLCK and hold.		
▼ For uncompensated Baro-VNAV systems, LNAV/VNAV NA below -15° C (5° F) or above 54° C (129° F).					
ATIS ★ 127.9 290.9	CORPUS CHRISTI APP CON 128.675 343.75	NAVY CORPUS TOWER ★ 134.85 340.2	GND CON 118.7 257.85	CLNC DEL 314.3	ASR/ PAR



† LNAV only VDP NA when using Corpus Christi altimeter setting.				
<div><div>600</div><div>1600</div><div>POLCK</div></div>				
CATEGORY	A	B	C	D
LNAV/VNAV DA	269-3/4		250 (300-3/4)	
LNAV MDA	400-1	381 (400-1)	400-1 1/8	381 (400-1 1/8)
CIRCLING	480-1	461 (500-1)	540-1 1/2 521 (600-1 1/2)	620-2 601 (700-2)
CORPUS CHRISTI ALTIMETER SETTING				
LNAV MDA	420-1 401 (500-1)		420-1 1/8 401 (500-1 1/8)	
CIRCLING	500-1 481 (500-1)	520-1 501 (600-1)	580-1 1/2 561 (600-1 1/2)	660-2 641 (700-2)



RNAV (GPS) RWY 13L