

APCH CRS	Rwy ldg	5001
222°	TDZE	15
	Arpt Elev	19

AL-98 [USN]

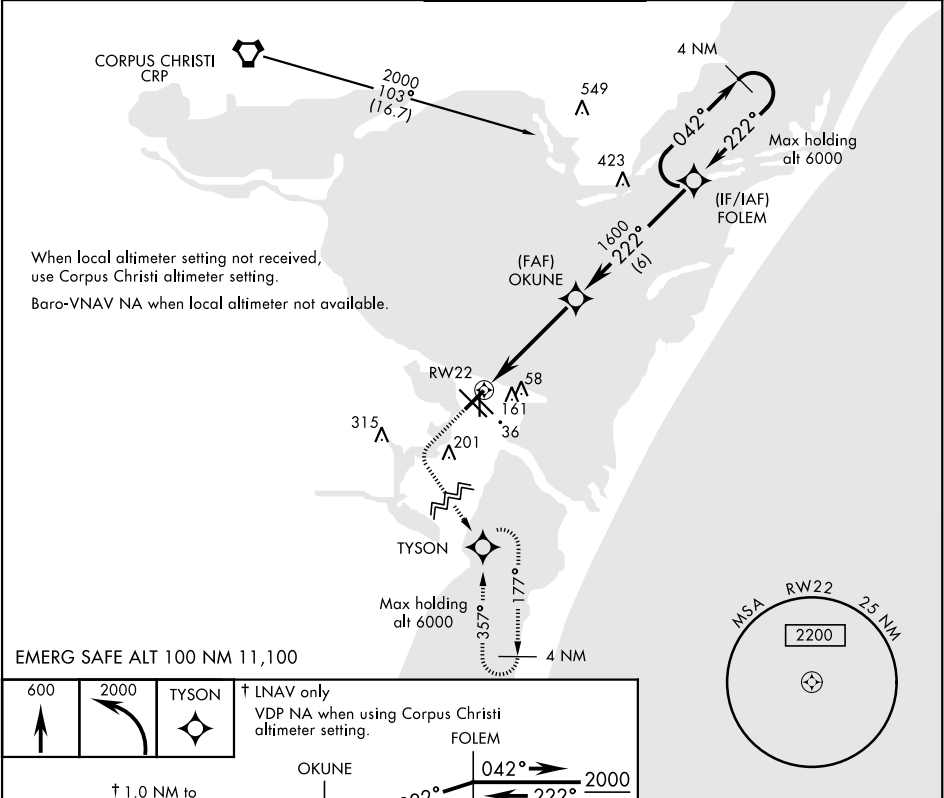
CORPUS CHRISTI NAS (TRUAX FLD) (KNGP)

RNP APCH - DME/DME RNP-0.3 NA.

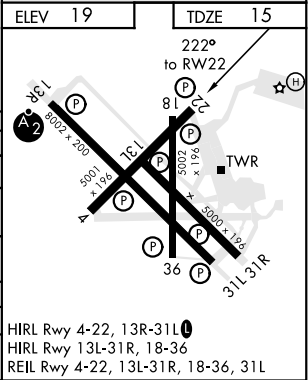
For uncompensated Baro-VNAV systems, LNAV/VNAV NA below -15°C (5°F) or above 54°C (129°F).

MISSED APPROACH: Climb to 600, then climbing left turn to 2000 direct TYSON and hold.

ATIS ★ 127.9 290.9	CORPUS CHRISTI APP CON 128.675 343.75	NAVY CORPUS TOWER ★ 134.85 340.2	GND CON 118.7 257.85	CLNC DEL 314.3	ASR/ PAR
-----------------------	------------------------------------------	-------------------------------------	-------------------------	-------------------	-------------



CATEGORY	A	B	C	D
LNAV MDA	380-1		365	(400-1)
LNAV/VNAV DA	290-7/8 275 (300-7/8)	301-7/8 286 (300-7/8)	309-7/8 294 (300-7/8)	320-7/8 305 (400-7/8)
C CIRCLING	480-1	461 (500-1)	540-1½ 521 (600-1½)	620-2 601 (700-2)
CORPUS CHRISTI ALTIMETER SETTING				
LNAV MDA	400-1	385 (400-1)	400-1½	385 (400-1½)
C CIRCLING	500-1 481 (500-1)	520-1 501 (600-1)	580-1½ 561 (600-1½)	660-2 641 (700-2)



SC-3, 31 DEC 2020 to 28 JAN 2021

SC-3, 31 DEC 2020 to 28 JAN 2021