

RNAV (GPS) RWY 31L

APCH CRS	Rwy Idg	8002
312°	TDZE	18
	Arpt Elev	19

AL-98 [USN]

CORPUS CHRISTI NAS (TRUAX FLD) (KNGP)

RNP APCH - DME/DME RNP-0.3 NA.

T For uncompensated Baro-VNAV systems, LNAV/VNAV NA below -15°C (5°F) or above 54°C (129°F).

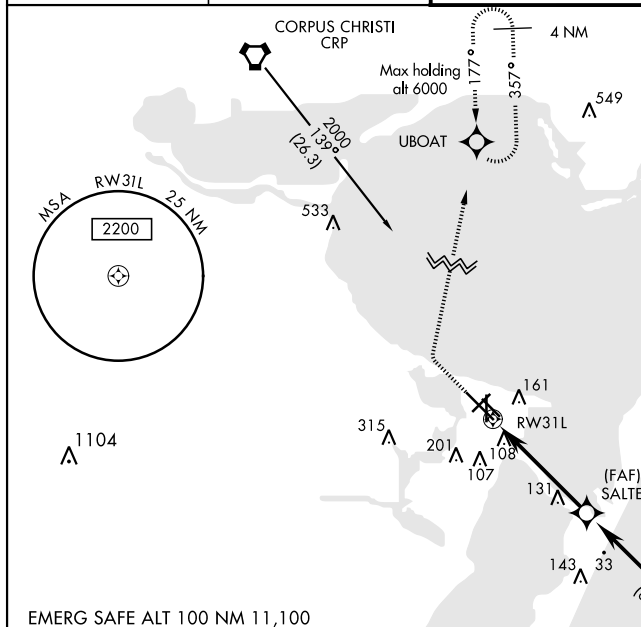
MISSED APPROACH: Climb to 600, then climbing right turn to 2000 direct UBOAT and hold.

ATIS ★
127.9 290.9

CORPUS CHRISTI APP CON
128,675 343.75

NAVY CORPUS TOWER ★
134.85 L 340.2

GND CON
118.7 257.8

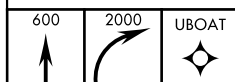
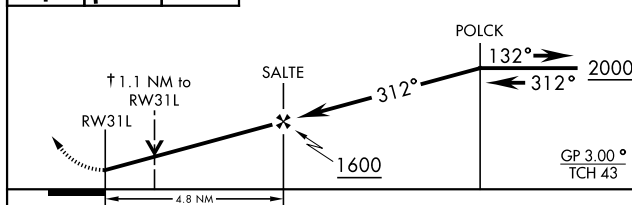
CLNC DE
314.3ASR,
PAR



When local altimeter setting not received,
use Corpus Christi altimeter setting.

Baro-VNAV NA when local
altimeter not available.

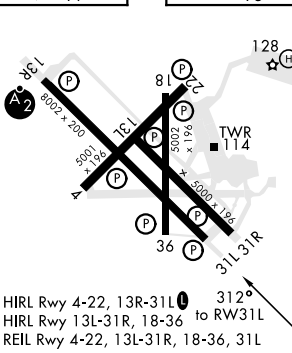
Northbound arrivals on V70-407 and V13-20-163 require turn in holding at CRP VORTAC (See L-20), or RADAR vectors. Holding at CRP NA for TACAN users.

EMERG SAFE ALT 100 NM 11,100

† LNAV only
VDP NA when using Corpus Christi
altimeter setting

CATEGORY	A	B	C	D
RNAV/VNAV DA	413-1½		395 (400-1½)	
RNAV MDA	420-1	402 (500-1)	420-1½	402 (500-1½)
 CIRCLING	480-1	461 (500-1)	540-1½ 521 (600-1½)	620-2 601 (700-2)
CORPUS CHRISTI ALTIMETER SETTING				
RNAV MDA	460-1	442 (500-1)	460-1½	442 (500-1½)
 CIRCLING	500-1 481 (500-1)	520-1 501 (600-1)	580-1½ 561 (600-1½)	660-2 641 (700-2)

ELEV	19		TDZE	18
------	----	--	------	----



CORPUS CHRISTI, TEXAS

27°42'N-97°17'W

CORPUS CHRISTI NAS (TRUAX FLD) (KNGP)

RNAV (GPS) RWY 31L

Amdt 1 16JUL20

SC-3, 31 DEC 2020 to 28 JAN 2021

SC-3, 31 DEC 2020 to 28 JAN 2021