

CORPUS CHRISTI, TEXAS

RNAV (GPS) RWY 31R

APCH CRS	Rwy ldg	5000
312°	TDZE	19
	Arpt Elev	19

AL-98 [USN]

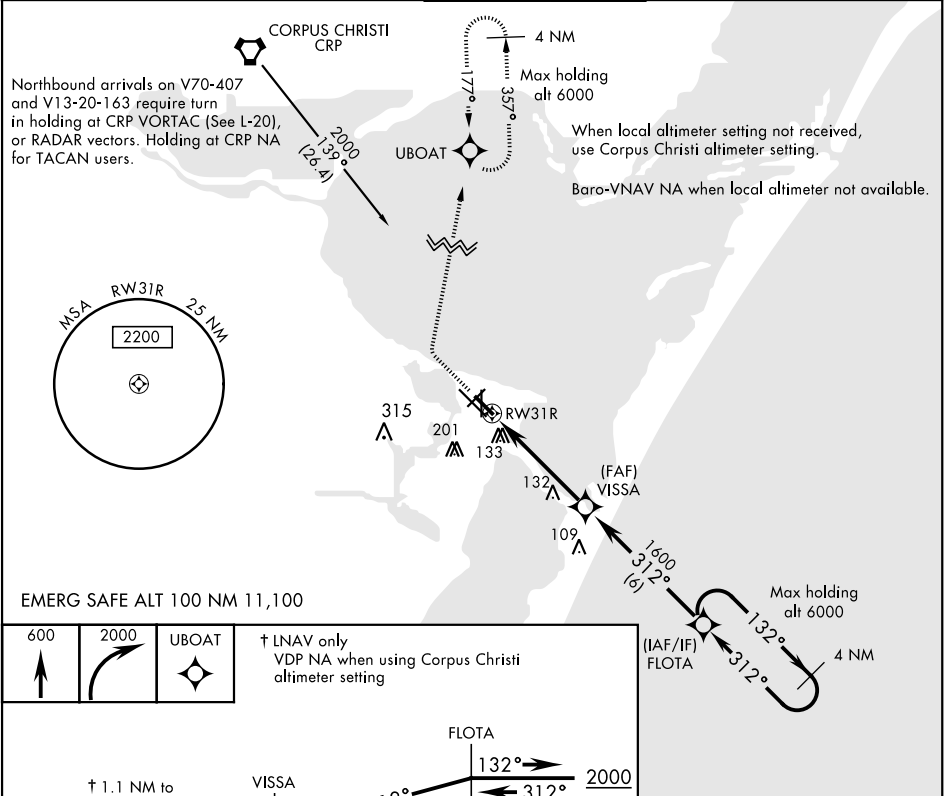
CORPUS CHRISTI NAS (TRUAX FLD) (KNGP)

RNP APCH - DME/DME RNP-0.3 NA.

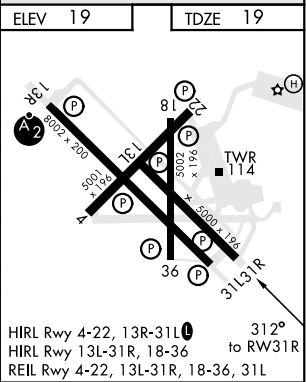
MISSED APPROACH: Climb to 600, then climbing right turn to 2000 direct UBOAT and hold.

For uncompensated Baro-VNAV systems, LNAV/VNAV NA below -15° C (5° F) or above 54° C (129° F).

ATIS ★ 127.9 290.9	CORPUS CHRISTI APP CON 128.675 343.75	NAVY CORPUS TOWER ★ 134.85 340.2	GND CON 118.7 257.85	CLNC DEL 314.3	ASR/ PAR
-----------------------	--	-------------------------------------	-------------------------	-------------------	-------------



	600	2000	UBOAT	† LNAV only VDP NA when using Corpus Christi altimeter setting
CATEGORY	A	B	C	D
LNAV/VNAV DA	412-1½	393	(400-1½)	
LNAV MDA	420-1	401 (500-1)	420-1½	401 (500-1½)
CIRCLING	480-1	461 (500-1)	540-1½ 521 (600-1½)	620-2 601 (700-2)
CORPUS CHRISTI ALTIMETER SETTING				
LNAV MDA	460-1	441 (500-1)	460-1½	441 (500-1½)
CIRCLING	500-1 481 (500-1)	520-1 501 (600-1)	580-1½ 561 (600-1½)	660-2 641 (700-2)



CORPUS CHRISTI, TEXAS

27°42'N-97°17'W

CORPUS CHRISTI NAS (TRUAX FLD) (KNGP)

RNAV (GPS) RWY 31R

Amdt 1 16JUL20

SC-3, 31 DEC 2020 to 28 JAN 2021

SC-3, 31 DEC 2020 to 28 JAN 2021