


VOR/DME or TACAN Y RWY 13R

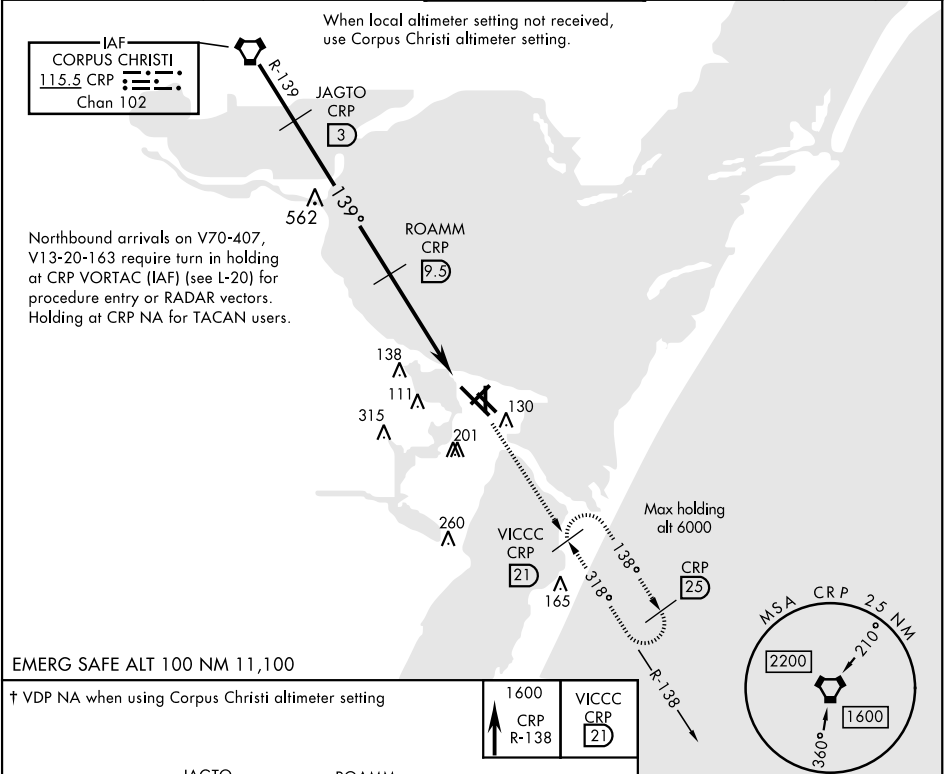
VORTAC CRP <b>115.5</b> Chan <b>102</b>	APCH CRS <b>139°</b>	Rwy Idg TDZE <b>13</b> Arpt Elev <b>19</b>
---	-------------------------	--

AL-98 [USN]

CORPUS CHRISTI NAS (TRUAX FLD) (KNGP)

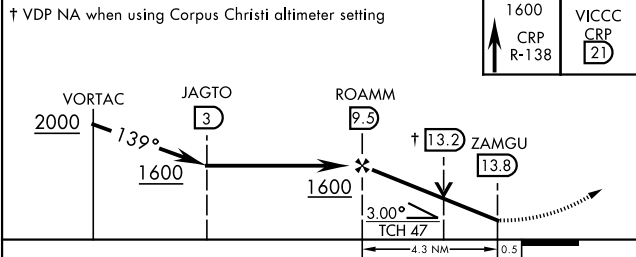
<b>▽</b> * When ALS inop, increase CAT AB vis to 1 mile, CAT CD vis to 1½ miles. ** When ALS inop, increase CAT AB vis to 1 mile, CAT CD vis to 1½ miles.	<b>SALSF</b> 	<b>MISSED APPROACH:</b> Climb to 1600 on CRP VORTAC R-138 to VICCC and hold.
--	---	--

<b>ATIS *</b> <b>127.9 290.9</b>	<b>CORPUS CHRISTI APP CON</b> <b>128.675 343.75</b>	<b>NAVY CORPUS TOWER *</b> <b>134.85 340.2</b>	<b>GND CON</b> <b>118.7 257.85</b>	<b>CLNC DEL</b> <b>314.3</b>	<b>ASR/ PAR</b>
-------------------------------------	--	---	---------------------------------------	---------------------------------	-----------------

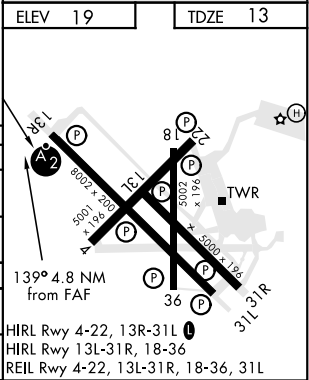


EMERG SAFE ALT 100 NM 11,100

† VDP NA when using Corpus Christi altimeter setting



CATEGORY	A	B	C	D
S-13R *	420-¾	407 (500-¾)	420-1	407 (500-1)
CIRCLING	480-1	461 (500-1)	540-1½ 521 (600-1½)	620-2 601 (700-2)
CORPUS CHRISTI ALTIMETER SETTING				
S-13R **	460-¾	447 (500-¾)	460-1	447 (500-1)
CIRCLING	500-1 481 (500-1)	520-1 501 (600-1)	580-1½ 561 (600-1½)	660-2 641 (700-2)



VOR/DME or TACAN Y RWY 13R

SC-3, 31 DEC 2020 to 28 JAN 2021

SC-3, 31 DEC 2020 to 28 JAN 2021