

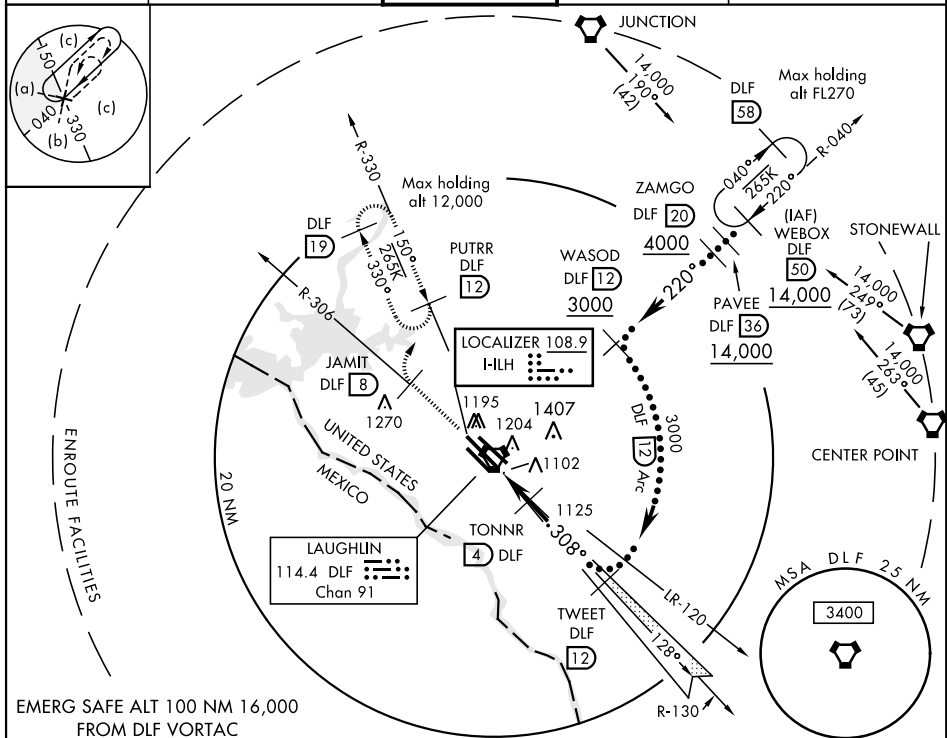
LOC HLH 108.9	APCH CRS 308°	Rwy Idg 31C 8852 31R 8315 TDZE 31C 1078 31R 1077 Arpt Elev 1081
-------------------------	-------------------------	--

JAL-111 [USAF]

LAUGHLIN AFB (KDLF)

<p>✈️ * Circling not authorized in sector SW of Rwy 13R-31L.</p>	<p>MISSED APPROACH: Climb to 3000 on DLF VORTAC R-306 to 8 DME (JAMIT), then turn right to intercept DLF R-330 to 12 DME (PUTRR) and hold.</p>
--	--

ATIS ★ 114.4 269.9	DEL RIO APP CON 119.6 259.1	LAUGHLIN TOWER ★ 125.2 307.375	GND CON 275.8	CLNC DEL 120.5 335.8
------------------------------	---------------------------------------	--	-------------------------	--------------------------------



3000

↑

DLF

R-306

JAMIT

DLF

8

PUTRR

R-330

DLF

12

VGSI and descent angles
not coincidental.

TONNR

4

2200

TWEET

R-130

12

3000

VORTAC

FOVMO

1.3

GS 3.00°

TCH 48

0.7 NM

2.7 NM

CATEGORY	A	B	C	D	E
S-ILS 31C		1328-7/8	250 (300-7/8)		
S-LOC 31C	1380-1	302 (300-1)	1380-7/8	302 (300-7/8)	
SIDESTEP 31R	1380-1	303 (300-1)	1380-7/8	303 (300-7/8)	
CIRCLING*	1500-1	1540-1	1700-1 3/4	1700-2	1720-2 1/4
	419 (500-1)	459 (500-1)	619 (700-1 3/4)	619 (700-2)	639 (700-2 1/4)

ELEV 1081

TDZE 31C 1078

TDZE 31R 1077

1267

TWR 1199

308° 3.4 NM from FAF

Rwy 31L Idg 6241'

MIRL Rwy 13R-31L

HIRL Rwy 13C-31C, 13L-31R