

ILS or LOC/DME RWY 13C

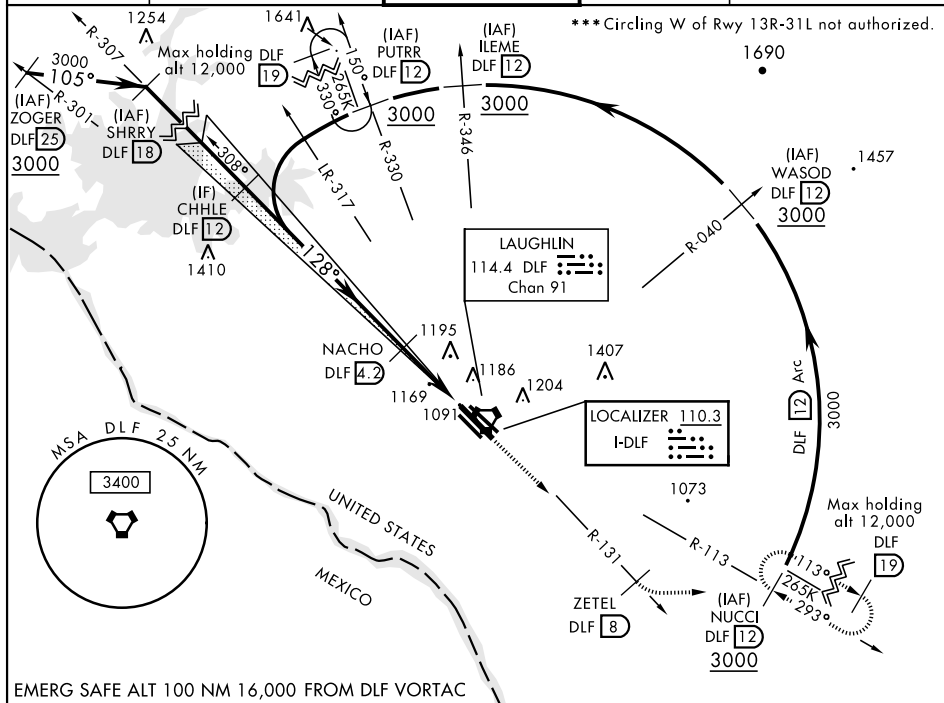
LOC I-DLF 110.3	APCH CRS 128°	Rwy Idg 13C 8852 13L 8315 TDZE 13C 1081 13L 1078 Arpt Elev 1081
---------------------------	-------------------------	--

AL-111 [USAF]

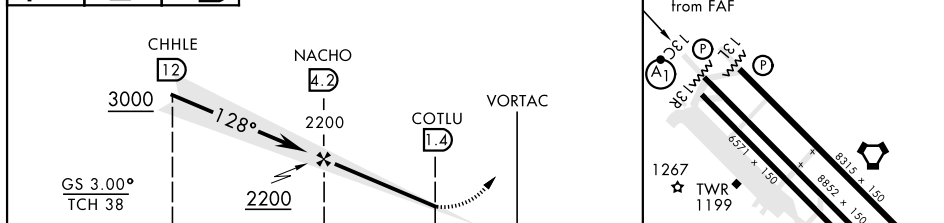
LAUGHLIN AFB (KDLF)

<p>▼ * When ALS inop, increase RVR to 40 and vis to 3/4 mile. ** When ALS inop, increase CAT AB RVR to 55 and vis to 1 mile, CAT CDE RVR to 50 and vis to 1 mile.</p>	<p>ALSF-1 A1</p>	<p>MISSED APPROACH: Climb to 3000 on DLF VORTAC R-131 to 8 DME (ZETEL), then turn left to intercept DLF R-113 to 12 DME (NUCCI) and hold.</p>
---	----------------------	---

ATIS ★ 114.4 269.9	DEL RIO APP CON 119.6 259.1	LAUGHLIN TOWER ★ 125.2 307.375	GND CON 275.8	CLNC DEL 120.5 335.8
------------------------------	---------------------------------------	--	-------------------------	--------------------------------



3000 ↑ DLF R-131	ZETEL DLF 8	NUCCI R-113 DLF 12
---------------------------	-------------------	--------------------------



CATEGORY	A	B	C	D	E
S-ILS 13C*		1281/24	200	(200-1/2)	
S-LOC 13C*	1420/24	339 (400-1/2)	1420/26	339 (400-1/2)	
SIDESTEP 13L		1440-1	362	(400-1)	
CIRCLING	1500-1 419 (500-1)	1540-1 459 (500-1)	1700-1 3/4 619 (700-1 3/4)	1700-2 619 (700-2)	1720-2 1/4 639 (700-2 1/4)

Rwy 31L Idg 6241'
MIRL Rwy 13R-31L
HRL Rwy 13C-31C, 13L-31R

ILS or LOC/DME RWY 13C