

DEL RIO, TEXAS

## ILS or LOC/DME RWY 31C

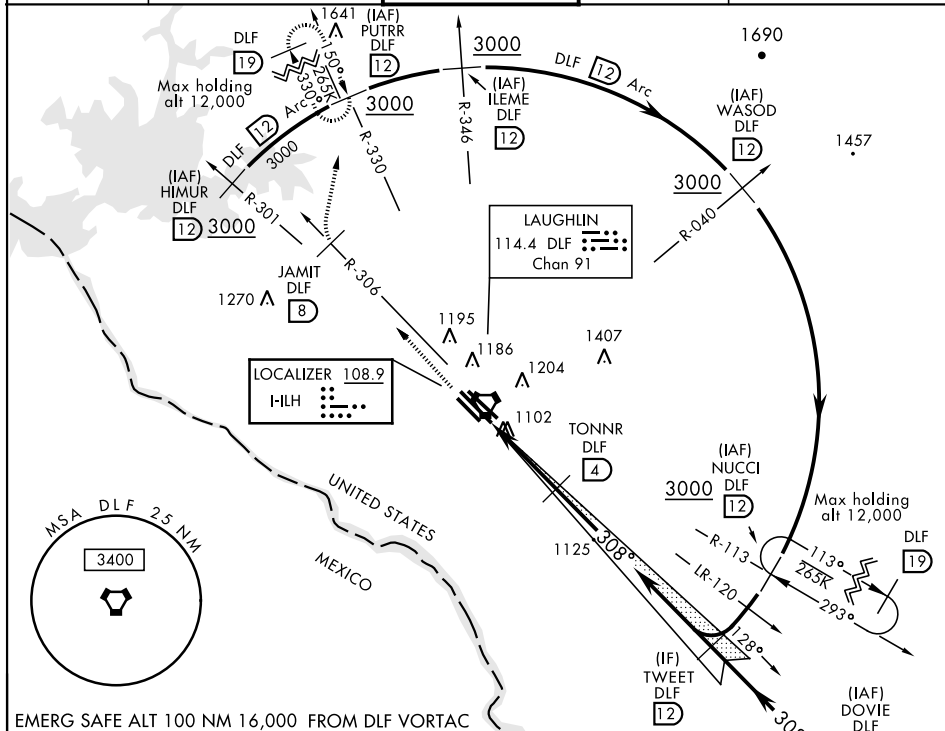
LOC I-ILH <b>108.9</b>	APCH CRS <b>308°</b>	Rwy Idg 31C <b>8852</b> 31R <b>8315</b> TDZE 31C <b>1078</b> 31R <b>1077</b> Arpt Elev <b>1081</b>
---------------------------	-------------------------	--

AL-111 [USAF]

LAUGHLIN AFB (KDLF)

* Circling W of Rwy 13R-31L not authorized.	MISSED APPROACH: Climb to 3000 on DLF VORTAC R-306 to 8 DME (JAMIT), then turn right to intercept DLF R-330 to 12 DME (PUTRR) and hold.
---	---

ATIS ★ <b>114.4 269.9</b>	DEL RIO APP CON <b>119.6 259.1</b>	LAUGHLIN TOWER ★ <b>125.2 307.375</b>	GND CON <b>275.8</b>	CLNC DEL <b>120.5 335.8</b>
------------------------------	---------------------------------------	--	-------------------------	--------------------------------



3000

DLF  
R-306

JAMIT

DLF  
8

PUTRR

R-330

DLF  
12

VGSI and descent  
angles not coincident

TWEET

R-130

12

3000

GS 3.00°

TCH 48

VORTAC

FOVMO

1.3

TONNR

4

2200

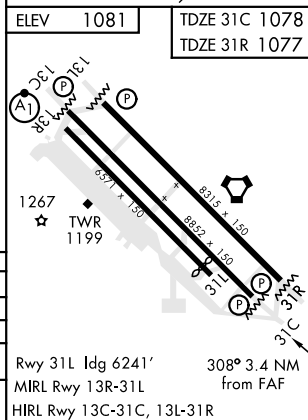
2200

308°

0.7 NM

2.7 NM

CATEGORY	A	B	C	D	E
S-ILS 31C	1328-7/8		250	(300-7/8)	
S-LOC 31C	1380-1	302 (300-1)	1380-7/8 302 (300-7/8)		
SIDESTEP 31R	1380-1	303 (300-1)	1380-7/8 303 (300-7/8)		
CIRCLING*	1500-1 419 (500-1)	1540-1 459 (500-1)	1700-1 3/4 619 (700-1 3/4)	1700-2 619 (700-2)	1720-2 1/4 639 (700-2 1/4)



DEL RIO, TEXAS

29°22'N-100°47'W

LAUGHLIN AFB (KDLF)

Amdt 4 17AUG17

## ILS or LOC/DME RWY 31C

SC-3, 31 DEC 2020 to 28 JAN 2021

SC-3, 31 DEC 2020 to 28 JAN 2021