

DEL RIO, TEXAS

## RNAV (GPS) B

APCH CRS 340°	Rwy Idg TDZE Arpt Elev	N/A N/A 1081
------------------	------------------------------	--------------------

AL-111 (USAF)

LAUGHLIN AFB (KDLP)

**T** \* Circling not authorized in sector NE of Rwy 13R-31L.

† MISSED APPROACH: Climbing left turn to 4000 direct ZOBUS, cross SCIFI at 4000, expect radar vectors.

ATIS★  
114.4 269.9

DEL RIO APP CON  
119.6 259.1

TOWER★  
125.2 307.375

GND CON  
275.8

CLNC DEL  
120.5 335.8

† CAUTION: Missed Approach  
Minimum Climb Rate to 4000

Knots	60	120	180	240	300	360
V/V(fpm)	500	1000	1500	2000	2500	3000

ATC Minimum Climb Rate  
to SCIF

DME/DME RNP-0.3 NA  
RNP APCH  
GPS REQUIRED

FOR USE BY 47  
FTW ACFT ONLY

## RADAR REQUIRED

EMERG SAFE ALT 100 NM 16,000



Fly Visual  
340°  
2.0 NM

SWANT

MINNM

OTULE  
2600

11/1/2010

1.6 NM-

---

---

---

CATEGORY  
**C** CIRCLING\*

1600

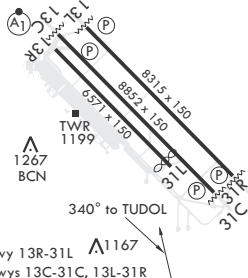
519

B
000-3

C

ELEV 1081

Rwy 31L Idg 6241'



DEL RIO, TEXAS

29°22'N - 100°47'W

LAUGHLIN AFB (KDLP)

Amdt 5 11OCT18

## RNAV (GPS) B

SC-3, 31 DEC 2020 to 28 JAN 2021

SC-3, 31 DEC 2020 to 28 JAN 2021