
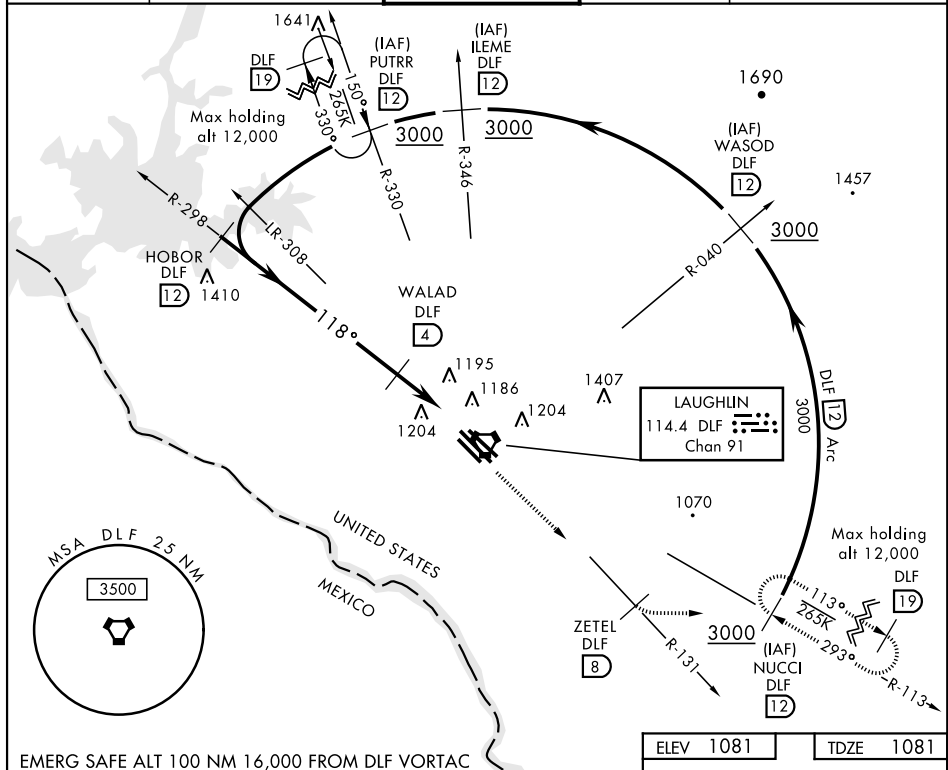


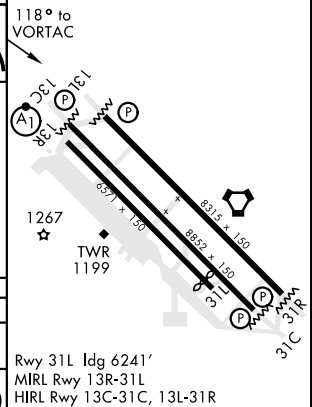
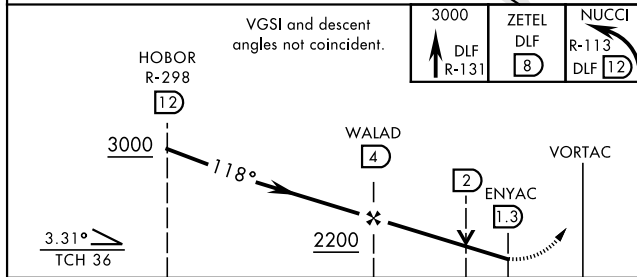
VOR/DME RWY 13C

VORTAC DLF 114.4 Chan 91		APCH CRS 118°		Rwy Idg 8852 TDZE 1081 Arpt Elev 1081		AL-111 [USAF]		LAUGHLIN AFB (KDLF)	
▼ When ALS inop, increase CAT AB RVR to 55 and vis to 1 mile, CAT CDE RVR to 60 and vis to 1 1/2 miles. ** Circling not authorized in sector SW of Rwy 13R-31L.						ALS-1 		MISSED APPROACH: Climb to 3000 on DLF VORTAC R-131 to 8 DME (ZETEL), then turn left to intcpt DLF R-113 to 12 DME (NUCCI) and hold.	
ATIS ★ 114.4 269.9		DEL RIO APP CON 119.6 259.1		LAUGHLIN TOWER ★ 125.2 307.375		GND CON 275.8		CLNC DEL 120.5 335.8	



EMERG SAFE ALT 100 NM 16.000 FROM DLF VORTAC

ELEV	1081		TDZE	1081
------	------	--	------	------



CATEGORY		A	B	C	D	E
S-13C *		1480/24 399 (400-½)		1480/40	399	(400-¾)
C CIRCLING*	1500-1 419 (500-1)	1540-1 459 (500-1)	1700-1½ 619 (700-1¾)	1700-2 619 (700-2)	1720-2½ 639 (700-2¾)	

DEL RIO, TEXAS
Amdt 3 13SEP18

29°22'N-100°47'W

LAUGHLIN AFB (KDLP)

VOR/DME RWY 13C