

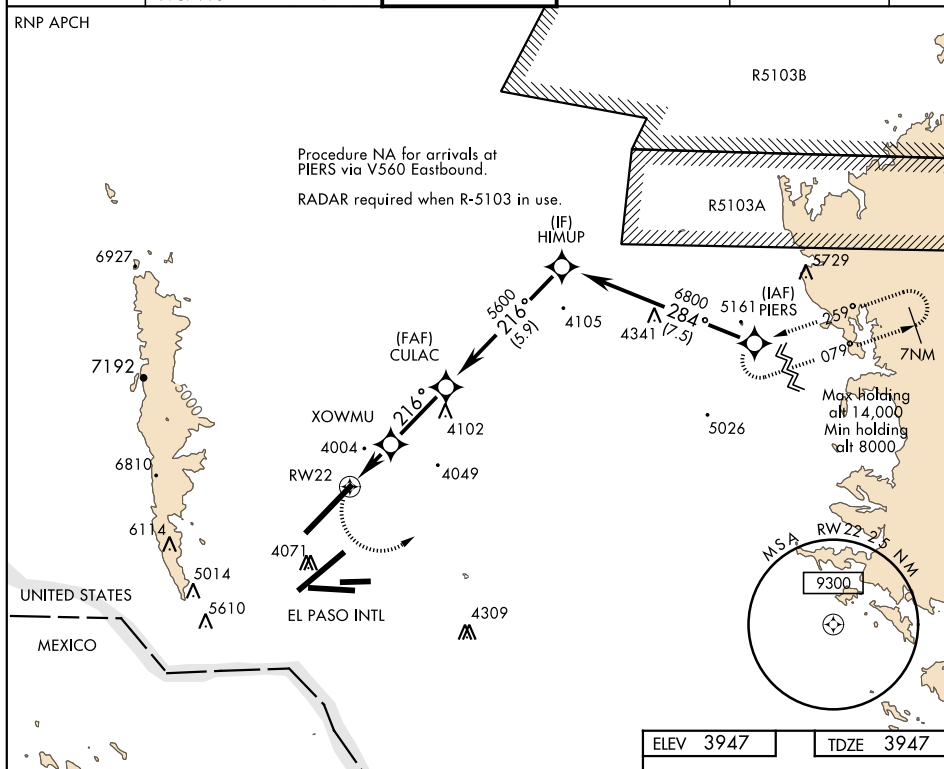
RNAV (GPS) RWY 22

BIGGS AAF (KBIF)


MISSED APPROACH: Climb to 4400 then climbing left turn to 8200 direct PIERS and hold, continue climb-in-hold to 8200.

ASR

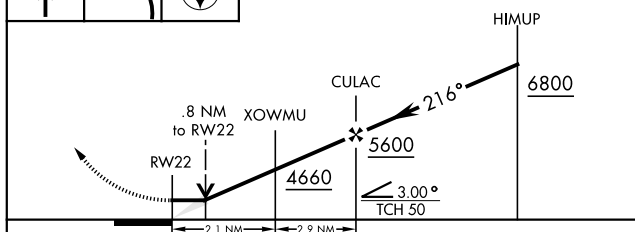
RNP APCH



SC-3, 31 DEC 2020 to 28 JAN 2021

4400 ↑	8200 ↖	PIERS 
-----------	-----------	--

VGSI and descent angles
not coincident.
(VGSI Angle 3.00/TCH 71)



CATEGORY	A	B	C	D
LNAB MDA *	4260- $\frac{3}{4}$		313 (400- $\frac{3}{4}$)	
C CIRCLING **	4400-1	453 (500-1)	4540-1 $\frac{1}{2}$ 593 (600-1 $\frac{1}{2}$)	4540-2 593 (600-2)

Diagram illustrating the layout of HIRL Rwy 4-22. The runway is oriented 216° to RW22. Key features include:

- ELEV 3947
- TDZE 3947
- Runway dimensions: 13,554 x 150
- Grade: 0.3% DOWN
- Navigation aids: A1, P, A, H, H, A, TWR
- Elevations: 3995, 4063, 4046

RNAV (GPS) RWY 22