

EL PASO, TEXAS

20142

HI-VOR or TACAN RWY 26L

EL PASO INTL (KELP)

VORTAC ELP 115.2 Chan 99	APCH CRS 245°	Rwy ldg 9025 THRE 3962 Arpt Elev 3962
--	-------------------------	---

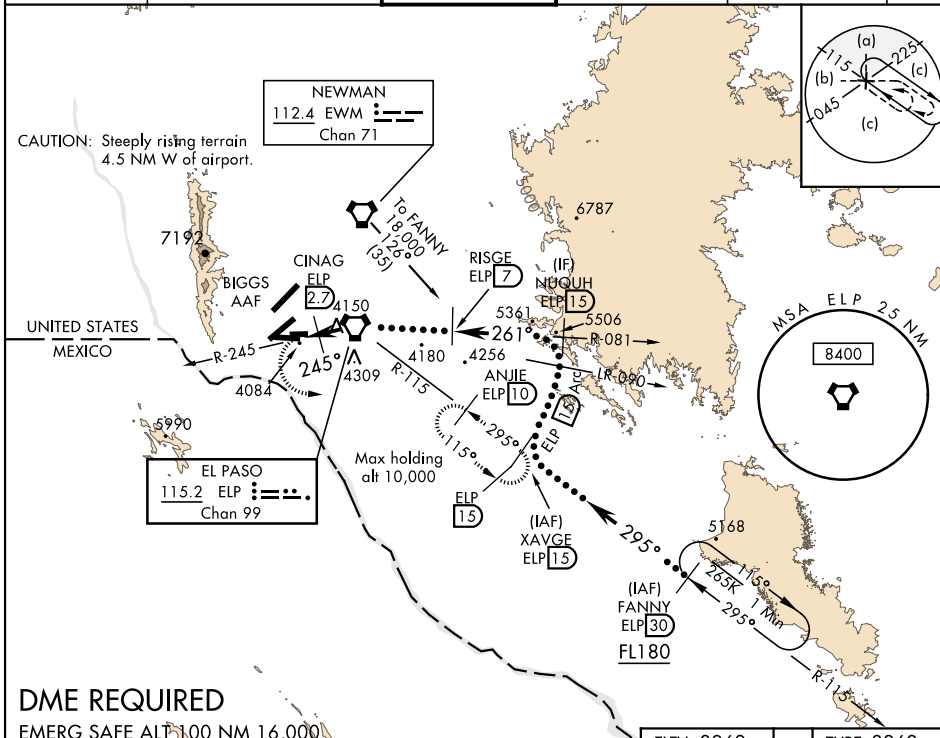
JAL-134 [USAF]

▼ *When ALS inop, increase CAT CDE vis to 1½ miles.
 **Circling NA for CAT DE west of Rwy 4-22.



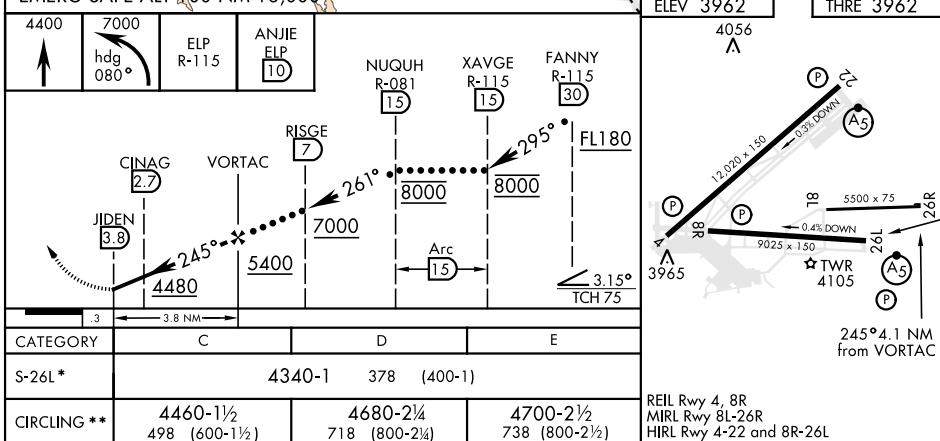
MISSED APPROACH: Climb to 4400, then climbing left turn to 7000 via heading 080° and ELP VORTAC R-115 to ANJIE/ELP 10 DME and hold, continue climb in hold to 7000.

ATIS 120.0 254.3	EL PASO APP CON S of V16 119.15 353.5 N of V16 124.25 298.85	EL PASO TOWER 118.3 239.275	GND CON 121.9 348.6	CLNC DEL 125.0 379.1	ASR
----------------------------	--	---------------------------------------	-------------------------------	--------------------------------	-----



DME REQUIRED

EMERG SAFE ALT 100 NM 16,000



EL PASO, TEXAS

31°48'N-106°23'W

EL PASO INTL (KELP)

Amdt 4A 21MAY20

HI-VOR or TACAN RWY 26L

SC-3, 31 DEC 2020 to 28 JAN 2021

SC-3, 31 DEC 2020 to 28 JAN 2021