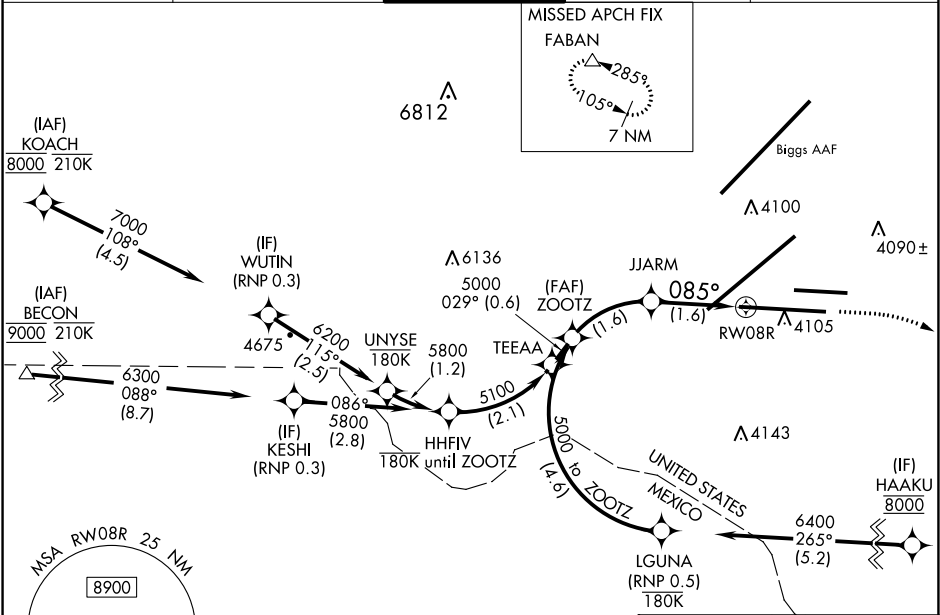


APP CRS	Rwy Idg	9025
085°	TDZE	3940
	Apt Elev	3962

RNAV (RNP) X RWY 8R
EL PASO INTL (ELP)

RNP AR APCH. RF required.		MISSED APPROACH: Climb to 4400 then climbing right turn to 7500 direct FABAN and hold.
ASR	For uncompensated Baro-VNAV systems, procedure NA below -5°C or above 54°C.	

D-ATIS 120.0 254.3	EL PASO APP CON 124.25 298.85	EL PASO TOWER 118.3 239.275	GND CON 121.9 348.6	CLNC DEL 125.0 379.1
-----------------------	----------------------------------	--------------------------------	------------------------	-------------------------



ELEV 3962 TDZE 3940	
<p>VGSI and RNAV glidepath not coincident (VGSI Angle 3.00/TCH 75).</p> <p>ZOOTZ 5000</p> <p>JJARM 4487</p> <p>GP 3.00° TCH 50</p> <p>See planview for multiple IF locations.</p> <p>1.6 NM 1.6 NM</p>	
CATEGORY	A B C D
RNP 0.20 DA	4193-¾ 253 (300-¾)
RNP 0.30 DA	4234-⅞ 294 (300-⅞)
AUTHORIZATION REQUIRED	
MIRL Rwy 8L-26R HIRL Rwy 4-22 and 8R-26L REIL Rwy 4 and 8R	