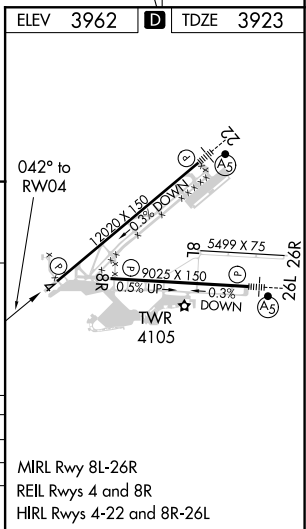
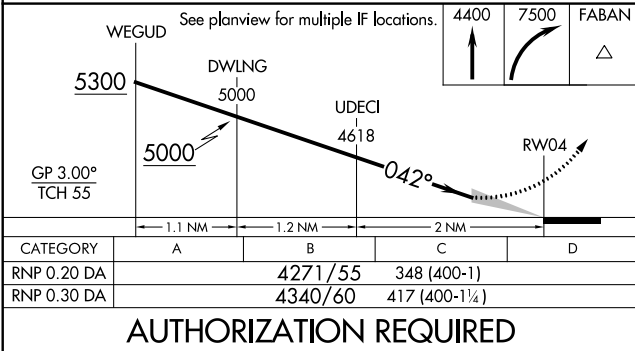
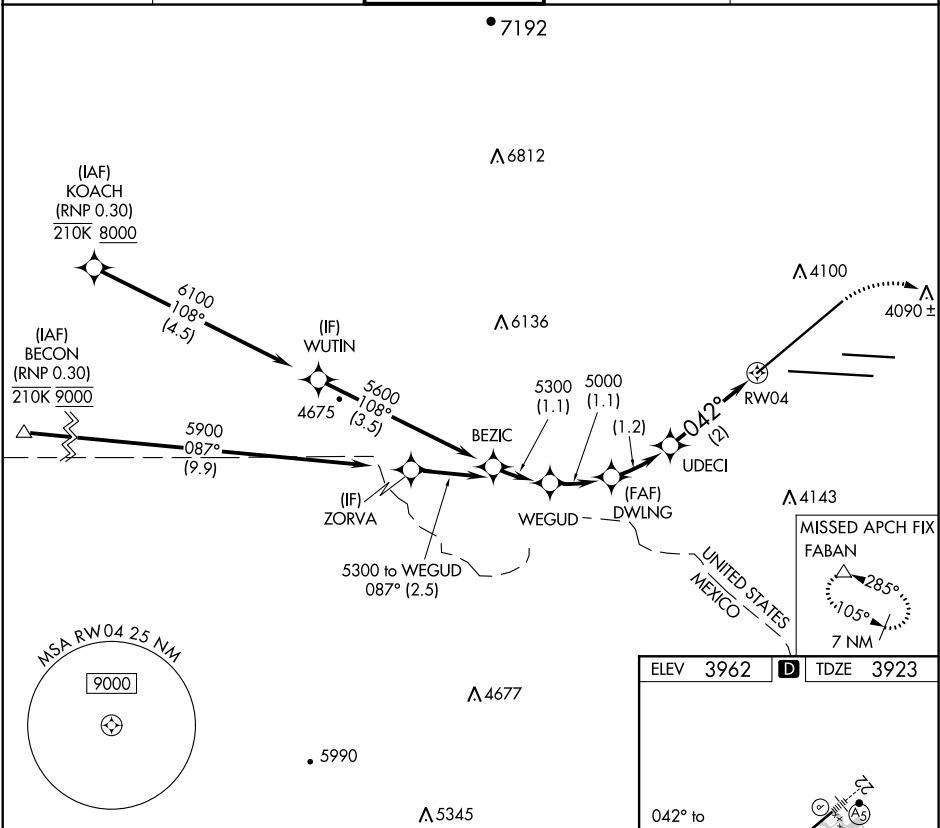


RNAV (RNP) Y RWY 4
EL PASO INTL (ELP)

T For uncompensated Baro-VNAV systems, procedure NA below -22°C
ASR or above 54°C.

MISSED APPROACH: Climb to 4400 then climbing right turn to 7500 direct FABAN and hold.

D-ATIS 120.0 254.3	EL PASO APP CON 124.25 298.85	EL PASO TOWER 118.3 239.275	GND CON 121.9 348.6	CLNC DEL 125.0 379.1
------------------------------	---	---------------------------------------	-------------------------------	--------------------------------



SC-3, 31 DEC 2020 to 28 JAN 2021

SC-3, 31 DEC 2020 to 28 JAN 2021