

WAAS CH 40223 W26A	APP CRS 265°	Rwy Idg TDZE 3962 Apt Elev 3962
--	------------------------	---

RNAV (GPS) Y RWY 26L

EL PASO INTL (ELP)

RNP APCH.

▼

▲

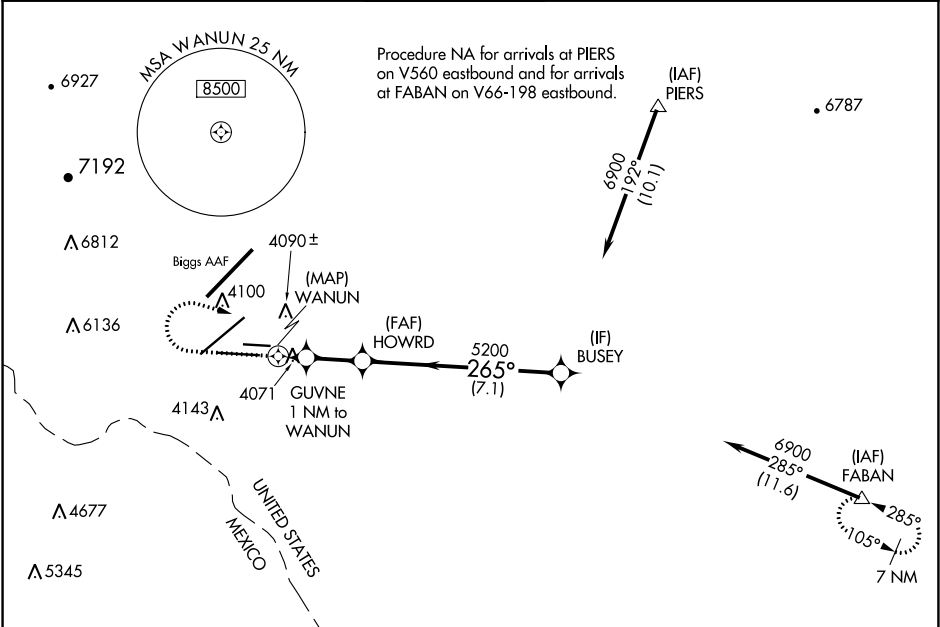
ASR

Circling NA for Cat D west of Rwy 4-22. For inop ALS, increase LP and LNAV Cat A/B visibility to 1 SM, and Cat C/D to 1½ SM.

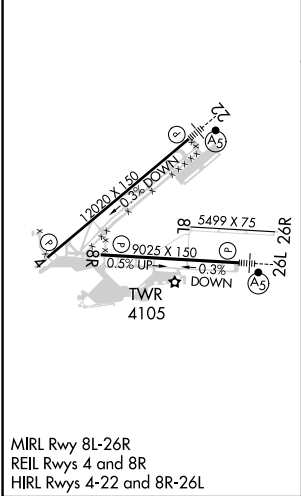
MALSR

MISSED APPROACH: Climb to 4380 then climbing right turn to 7500 direct FABAN and hold.

D-ATIS 120.0 254.3	EL PASO APP CON 124.25 298.85	EL PASO TOWER 118.3 239.275	GND CON 121.9 348.6	CLNC DEL 125.0 379.1
------------------------------	---	---------------------------------------	-------------------------------	--------------------------------



ELEV 3962	D	TDZE 3962
-----------	----------	-----------



4380	7500	FABAN	VGSI and descent angles not coincident (VGSI Angle 3.00/TCH 75).			

SC-3, 31 DEC 2020 to 28 JAN 2021

SC-3, 31 DEC 2020 to 28 JAN 2021