

NDBHMA

329

APPCRCS

352°

RwyIdg

6002

TDZE

917

AptElev

930

SOUTH TEXAS RGNLAT HONDO (HDO)

NDB RWY 35R

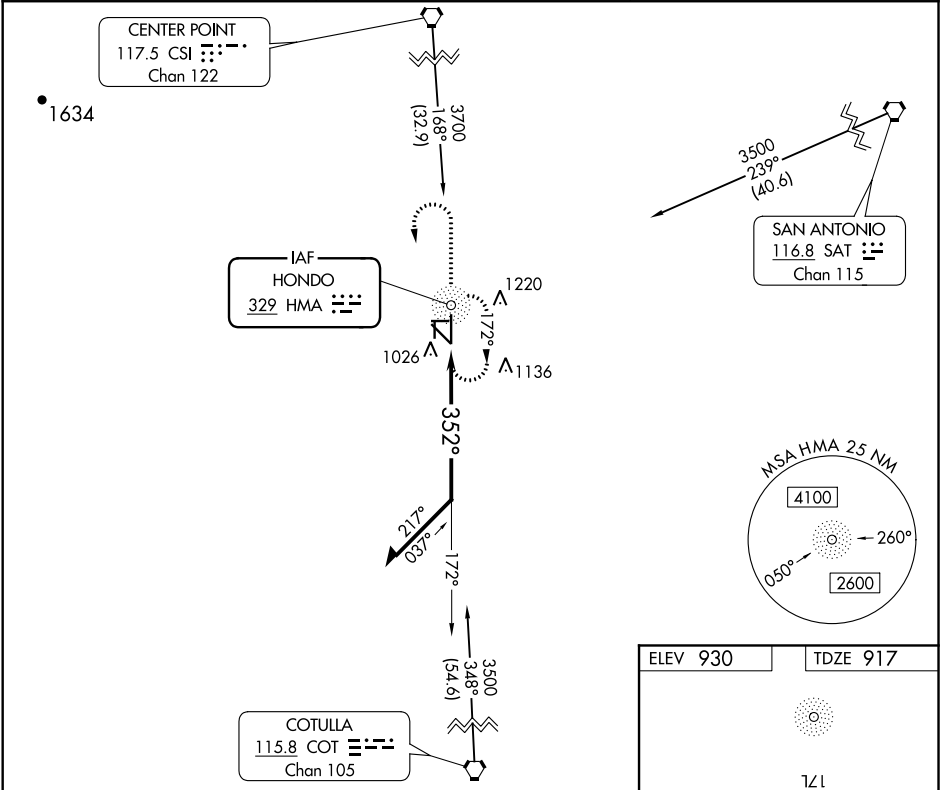
▼

Visibility reduction by helicopters NA. When local altimeter setting not received, use Castroville altimeter setting and increase all MDA 80 feet, increase all Cats C/D visibility ¼ mile. Circling Rwy 8, 13, 17R, 26, 31, 35L NA at night.

⚠

MISSED APPROACH: Climb to 2000 then climbing left turn to 3500 direct to HMA NDB and hold.

| | | |
|-----------------|---------------------------------|--------------------------|
| ASOS 119.675 | HOUSTON CENTER 125.625 269.4 | UNICOM 122.725 (CTAF) |
|-----------------|---------------------------------|--------------------------|



2000

3500

HMA

HMA NDB

Remain within 10 NM

172°

352°

2600

| CATEGORY | A | B | C | D |
|----------|--------------------|--------------------|--------------------|--------------------|
| S-35R | 1560-1 643 (700-1) | 1560-1 643 (700-1) | 1560-1 643 (700-1) | 1560-2 643 (700-2) |
| CIRCLING | 1560-1 630 (700-1) | 1560-1 630 (700-1) | 1580-1 650 (700-1) | 1580-2 650 (700-2) |

ELEV 930

TDZE 917

121

35L

35R

352° to HMA NDB

MIRL Rwy 17L-35R