

20142

WAAS CH <b>65841</b> <b>W14A</b>	APP CRS <b>142°</b>	Rwy Idg <b>5927</b> TDZE <b>508</b> Apt Elev <b>508</b>
--	------------------------	---

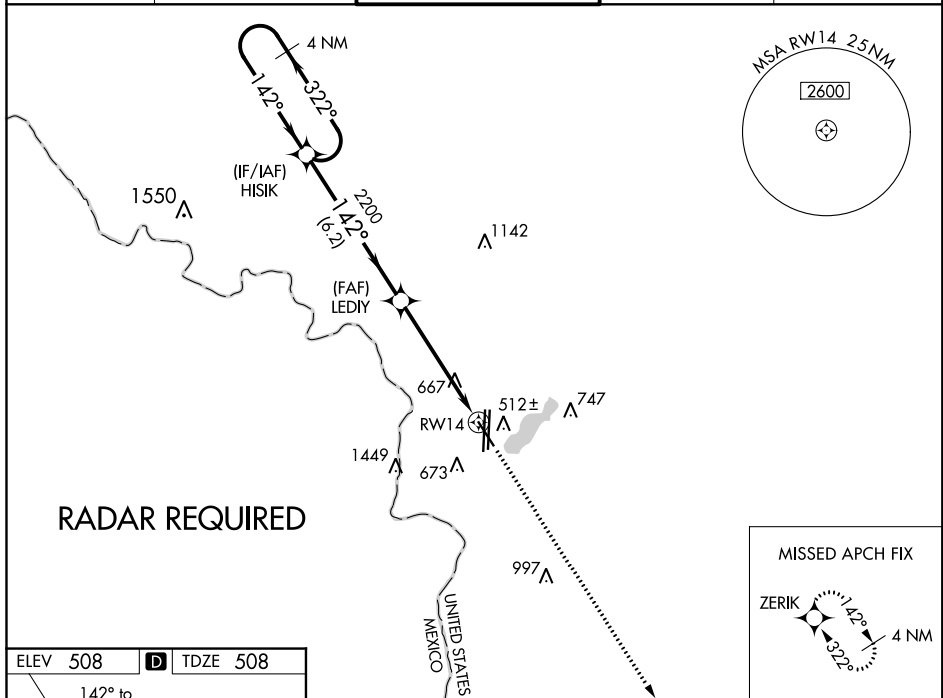
RNAV (GPS) RWY 14  
LAREDO INTL (LRD)

LAFDO INTI (LRD)

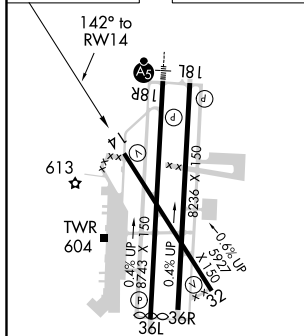
**T** For uncompensated Baro-VNAV systems, LNAV/VNAV NA below 1°C (34°F) or above 54°C (130°F). Circling NA west of Rwy 14 and 36L.  
**A** DME/DME RNP-0.3 NA.

**MISSED APPROACH:** Climb to 2500 direct ZERIK and hold.

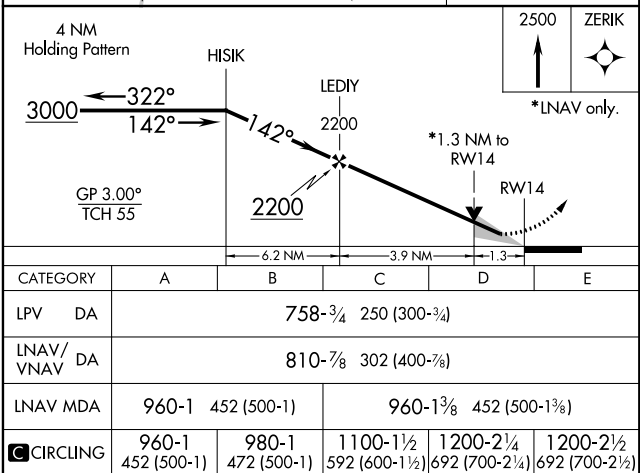
ATIS <b>125.775</b>	HOUSTON CENTER <b>127.8 307.2</b>	LAREDO TOWER ★ <b>120.1(CTAF) 0 257.9</b>	GND CON <b>121.8</b>	UNICOM <b>122.95</b>
------------------------	--------------------------------------	--	-------------------------	-------------------------



ELEV 508	<b>D</b>	TDZE 508
----------	----------	----------



MIRL Rwy 14-32  
HIRL Rwys 18R-36L and 18L-36R



LAREDO, TEXAS  
Amdt 1 01FEB18

27°33'N-99°28'W

LAREDO INTL (LRD)  
RNAV (GPS) RWY 14