

WAAS Ch 82599 W18A	APP CRS 178°	Rwy Idg 8743 TDZE 504 Apt Elev 508
--	------------------------	---

RNAV (GPS) RWY 18R
LAREDO INTL (LRD)

T For uncompensated Baro-VNAV systems, LNAV/VNAV NA below 1°C (34°F) or above 54°C (130°F). Circling NA West of Rwy 14 and 36L. DME/DME RNP-0.3 NA.

A For inop ALE, increase LPV Cat E visibility to $\frac{3}{4}$ SM, LNAV/VNAV all Cats visibility to $\frac{1}{2}$ SM, and LNAV Cats C/D/E to 1 SM.

MALSR



MISSED APPROACH:
Climb to 1000 then climbing
left turn to 2500 direct ELKOS
and hold.

ATIS 125.775	HOUSTON CENTER 127.8 307.2	LAREDO TOWER* 120.1(CTAF) 0 257.9	GND CON 121.8	UNICOM 122.95
-----------------	-------------------------------	--------------------------------------	------------------	------------------

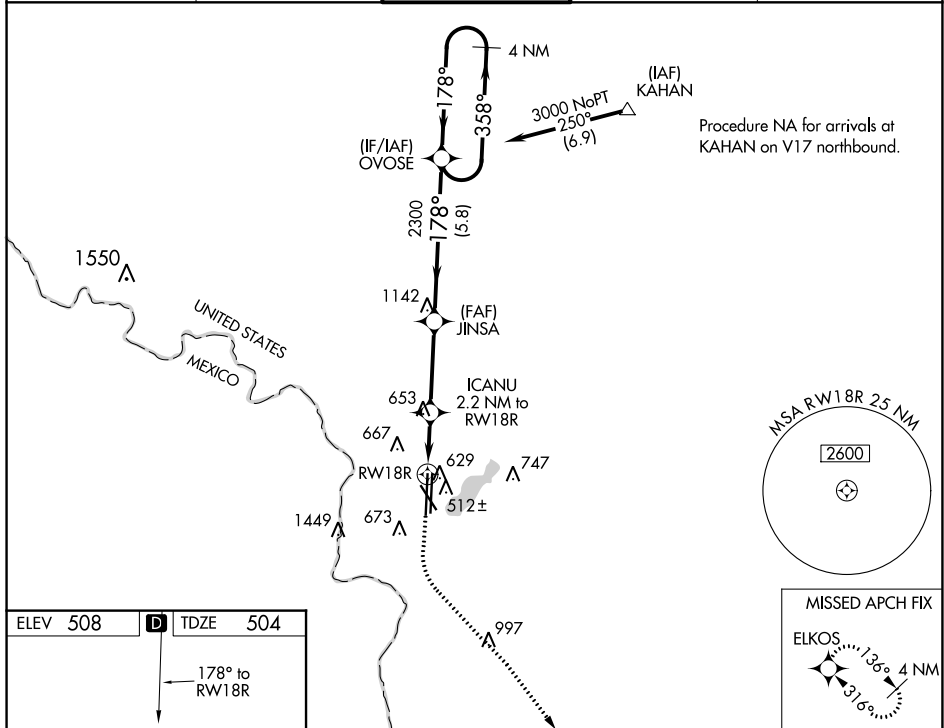


Figure 1-1 illustrates a 4 NM Holding Pattern. The pattern is defined by a 4 NM distance and a 358°/178° turn. The pattern is labeled "4 NM Holding Pattern" and "GP 3.00° TCH 57". The diagram also shows the approach path from the south, with a 178° turn to the final approach.

LAREDO, TEXAS
Amdt 2 01FEB18

27°33'N-99°28'W

LAREDO INTL (LRD)

RNAV (GPS) RWY 18R