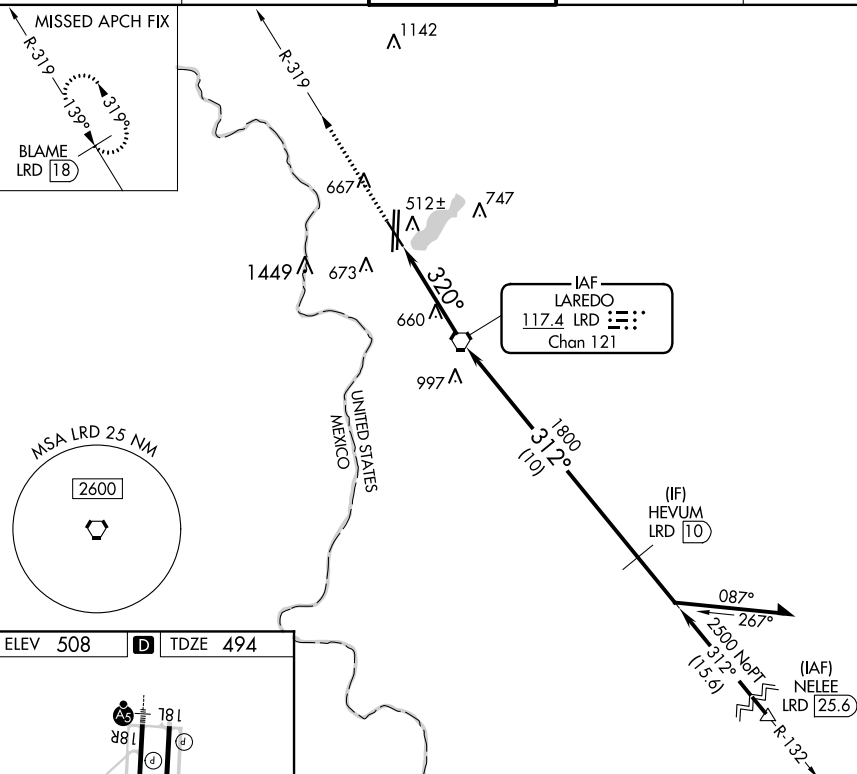


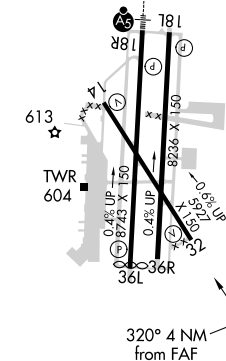
VOR or TACAN RWY 32
LAREDO INTL (LRD)

MISSED APPROACH: Climb to 2600 on LRD VORTAC R-319 to BLAME/LRD 18 DME and hold.

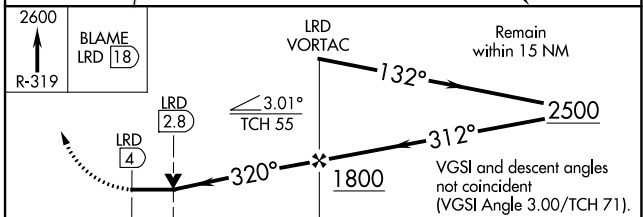
ATIS 125.775	HOUSTON CENTER 127.8 307.2	LAREDO TOWER ★ 120.1 (CTAF) 0 257.9	GND CON 121.8	UNICOM 122.95
------------------------	--------------------------------------	---	-------------------------	-------------------------




ELEV 508	D	TDZE 494
----------	----------	----------



MIRL Rwy 14-32
HIRL Rwy 18R-36L and 18L-36R



		1.2		2.8 NM			
CATEGORY	A		B		C	D	E
S-32	920-1 426 (500-1)		920-1¼ 426 (500-1¼)				
 CIRCLING	940-1 432 (500-1)	980-1 472 (500-1)	1100-1½ 592 (600-1½)	1200-2¼ 692 (700-2¼)	1200-2½ 692 (700-2½)		

SC-3, 31 DEC 2020 to 28 JAN 2021