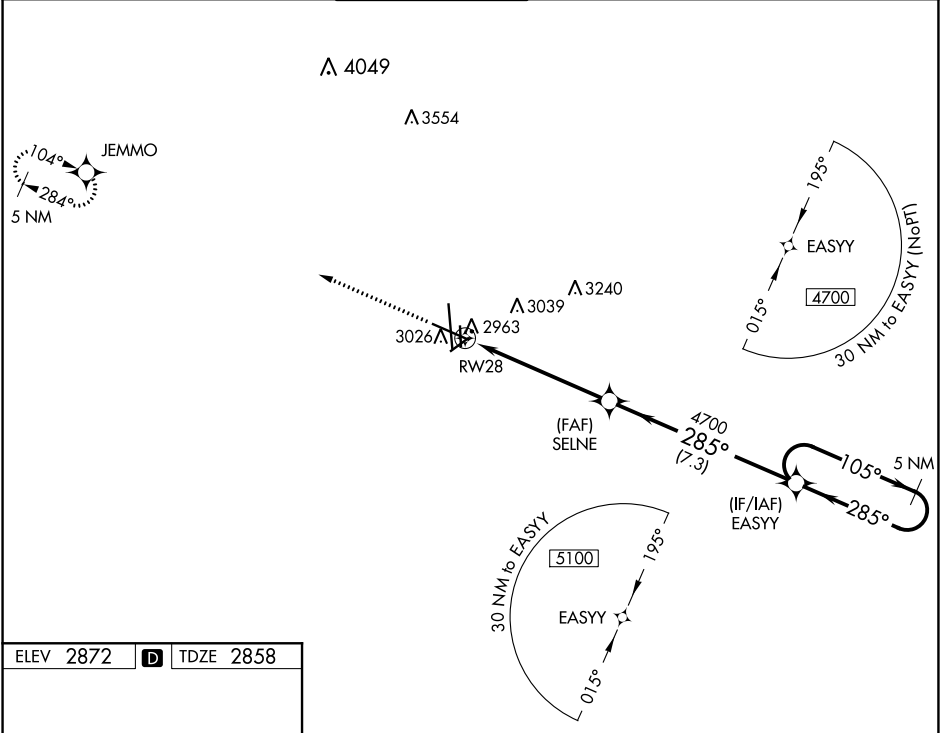


WAAS CH 81816 W28A	APP CRS 285°	Rwy Idg TDZE Apt Elev	7610 2858 2872
--	------------------------	-----------------------------	---

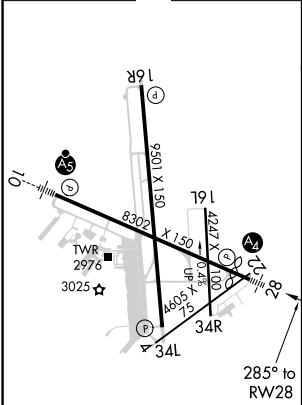
RNAV (GPS) RWY 28
MIDLAND INTL AIR AND SPACE PORT (MAF')

ASR For uncompensated Baro-VNAV systems, LNAV/VNAV NA below -11°C (13°F) or above 25°C (77°F). Circling Rwy 16L NA at night. DME/DME RNP-0.3 NA. Inop table does not apply to LPV all Cats.	MALS 	MISSED APPROACH: Climb to 5000 direct JEMMO and hold.
--	----------	---



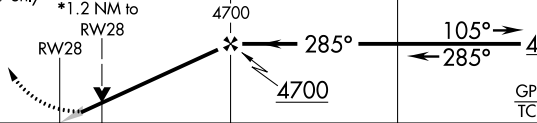
ATIS 126.8 235.975	MIDLAND APP CON ★ 124.6 290.4	MIDLAND TOWER ★ 118.7 (CTAF) 0 273.45	GND CON 121.9 348.6	CLNC DEL 118.05 317.65	UNICOM 122.95
------------------------------	---	---	-------------------------------	----------------------------------	-------------------------



ELEV 2872	D	TDZE 2858
-----------	----------	-----------



REIL Rwy 34L
MIRL Rwy 4-22 and 16L-34R
HIRL Rwy 10-28 and 16R-34L

5000	JEMMO	5 NM Holding Pattern			
					
*LNAV only	*1.2 NM to RW28	SELNE 4700	EASY	4700	GP 3.00° TCH 53
					
CATEGORY	A	B	C	D	
LPV DA	3058- ³ / ₄		200 (200- ³ / ₄)		
LNAV/ VNAV DA	3271-1 ¹ / ₈		413 (500-1 ¹ / ₈)		
LNAV MDA	3280- ³ / ₄	422 (500- ³ / ₄)	3280-1	422 (500-1)	
CIRCLING	3440-1	568 (600-1)	3440-1 ¹ / ₂ 568 (600-1 ¹ / ₂)	3520-2 648 (700-2)	