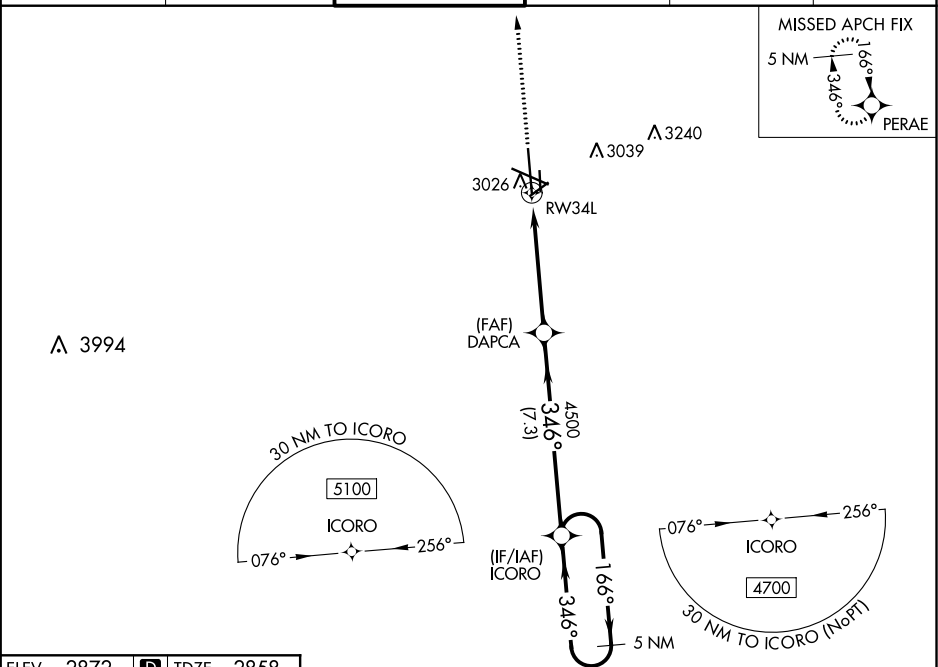


WAAS CH <b>66029</b> <b>W34A</b>	APP CRS <b>346°</b>	Rwy Idg TDZE Apt Elev	<b>9501</b> <b>2858</b> <b>2872</b>
--	------------------------	-----------------------------	---

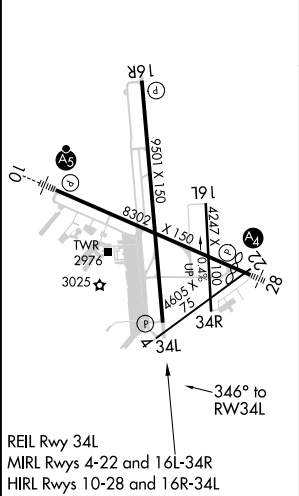
RNAV (GPS) RWY 34L  
MIDLAND INTL AIR AND SPACE PORT (M.A.F.)

ASR For uncompensated Baro-VNAV systems, LNAV/VNAV NA below -11°C (13°F) or above 26°C (78°F). Circling Rwy 16L NA at night. DME/DME RNP-0.3 NA.	MISSED APPROACH: Climb to 5100 direct PERAE and hold.
---	---

ATIS <b>126.8 235.975</b>	MIDLAND APP CON* <b>124.6 290.4</b>	MIDLAND TOWER* <b>118.7 (CTAF) 0 273.45</b>	GND CON <b>121.9 348.6</b>	CLNC DEL <b>118.05 317.65</b>	UNICOM <b>122.95</b>
------------------------------	--	--	-------------------------------	----------------------------------	-------------------------



ELEV 2872	<b>D</b>	TDZE 2858
-----------	----------	-----------



5100	PERAE	* LNAV only	DAPCA	ICORO	5 NM Holding Pattern
			4500	4700	
		* 1.2 NM to RW34L	346°	166°	
			4500	346°	
		1.2	3.8 NM	7.3 NM	
CATEGORY	A	B	C	D	
LPV DA	3058-3/4 200 (200-3/4)				
LNAV/VNAV DA	3203-1 1/8 345 (400-1 1/8)				
LNAV MDA	3280-1	422 (500-1)	3280-1 1/4	422 (500-1 1/4)	
CIRCLING	3440-1	568 (600-1)	3440-1 1/2	3520-2	568 (600-1 1/2) 648 (700-2)

SC-3, 31 DEC 2020 to 28 JAN 2021

SC-3, 31 DEC 2020 to 28 JAN 2021