
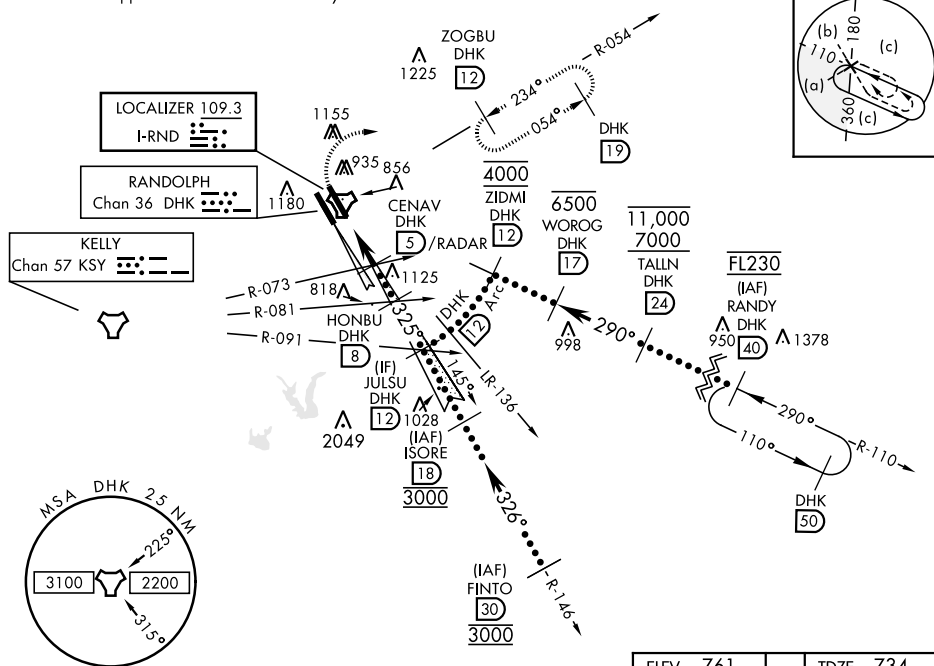
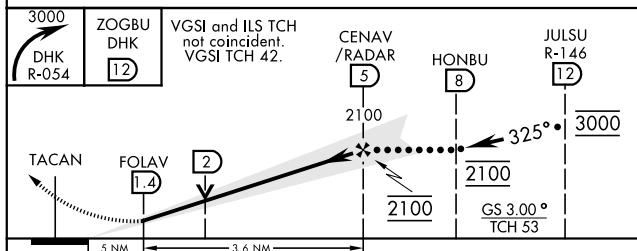


| | | | | | | | |
|---|---|---|---|--|------------------------------------|---|---|
| LOC I-RND 109.3 | APCH CRS 325° | Rwy Idg TDZE Arpt Elev 8351 734 761 | JAL-341 [USAF] | RANDOLPH AFB (KRND) | | | |
| *When ALS inop, increase CAT CDE RVR to 40 and vis to ¾ mile. **When ALS inop, increase CAT CDE RVR to 60 and vis to 1 ½ miles. ***Circling not authorized SW of Rwy 15L-33R. | | | ALSF-1  | MISSED APPROACH: Climbing right turn to 3000, intercept DHK TACAN R-054 to ZOGBU and hold. | | | |
| ATIS ★ 290.525 | SAN ANTONIO APP CON 128.05 318.1 | RANDOLPH TOWER ★ 128.25 294.7 | RANDOLPH GND CON 119.65 275.8 | CLNC DEL (RWY 15L-33R) 338.35 | HANGOVER ATIS ★ 327.8 | HANGOVER TOWER ★ 120.5 291.1 | HANGOVER GND CON 124.75 353.75 |

Simultaneous approaches authorized with Rwy 33L and 33R.



EMERG SAFE ALT 100 NM 4200



| CATEGORY | C | D | E |
|----------------------|-------------------------|--------|---------------|
| S-ILS 33R * | 934/24 | 200 | (200-½) |
| S-LOC 33R** | 1140/40 | 406 | (400-¾) |
| C CIRCLING*** | 1260-1½ 499 (500-1½) | 1800-3 | 1039 (1100-3) |

