
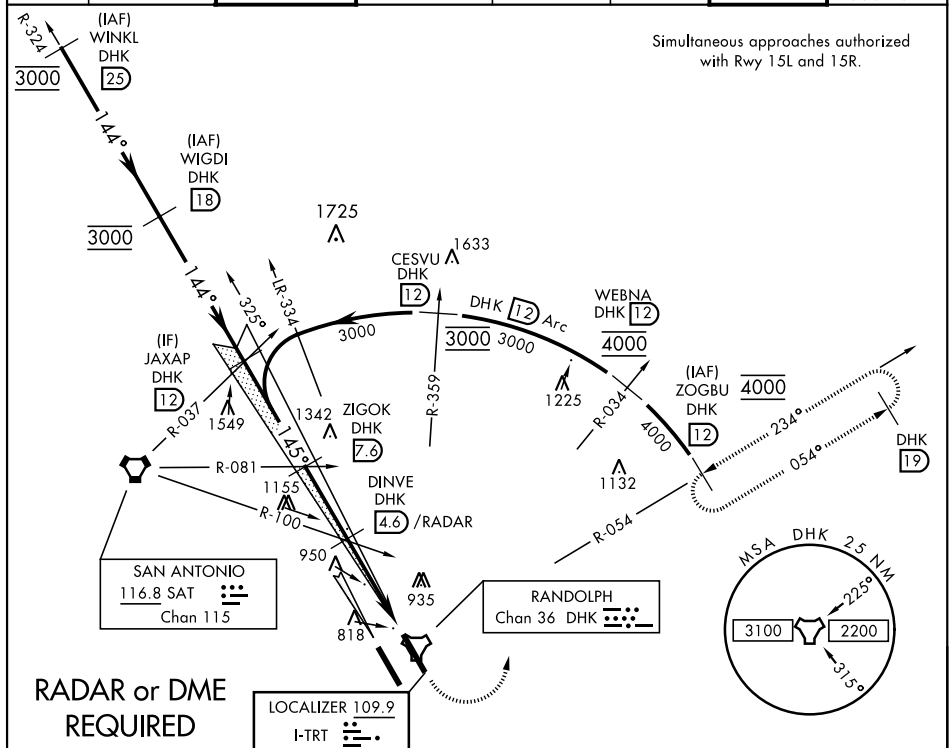


## ILS or LOC RWY 15L

LOC I-TRT <b>109.9</b>		APCH CRS <b>145°</b>	Rwy Idg <b>8351</b> TDZE <b>742</b> Arpt Elev <b>761</b>	AL-341 [USAF]	RANDOLPH AFB (KRND)		
* When ALS inop, increase CAT AB RVR to 55 and vis to 1 mile, CAT CDE vis to 1½ miles. ** Circling not authorized SW of Rwy 15L-33R.				ALSF-1 	MISSED APPROACH: Climbing left turn to 3000, intercept DHK TACAN R-054 to ZOGBU and hold.		
ATIS ★ <b>290.525</b>	SAN ANTONIO APP CON <b>128.05 318.1</b>	RANDOLPH TOWER ★ <b>128.25 294.7</b>	RANDOLPH GND CON <b>119.65 275.8</b>	CLNC DEL (RWY 15L-33R) <b>338.35</b>	HANGOVER ATIS ★ <b>327.8</b>	HANGOVER TOWER ★ <b>120.5 291.1</b>	HANGOVER GND CON <b>124.75</b> <b>353.75</b>

Simultaneous approaches authorized  
with Rwy 15L and 15R.



EMERG SAFE ALT 100 NM 4200

SAT R-037  
JAXAP  
DHK  
12

3000

SAT R-081  
ZIGOK  
DHK  
7.9

2100

SAT R-100  
DINVE  
DHK  
4.6 / RADAR

2100

3000  
DHK  
R-054

12

ZOGBU  
DHK  
12

3000

GP 3.00°  
TCH 41

145°

2100

2100

2100

1.9

JEPGA

1

TACAN

3.6 NM

0.5 NM

VGSI and ILS TCH  
not coincident.  
VGSI TCH 46.

145° 4.1 NM  
from FAF

785

911

857

851

835

848

860

840

833

33L

33R

CATEGORY	A		B		C		D		E	
S-ILS 15L	942/40		200		(200-¾)					
S-LOC 15L *	1220/40	478 (500-¾)	1220/60		478 (500-1½)					
CIRCLING **	1220-1	459 (500-1)	1260-1½ 499 (500-1½)		1800-3		1039 (1100-3)			

HIRL all Rwy  
ALS Rwy 15L nstd len 2100'

FAF to MAP 3.6 NM

Knots	60	90	120	150	180
Min:Sec	3:36	2:24	1:48	1:26	1:12

## ILS or LOC RWY 15L