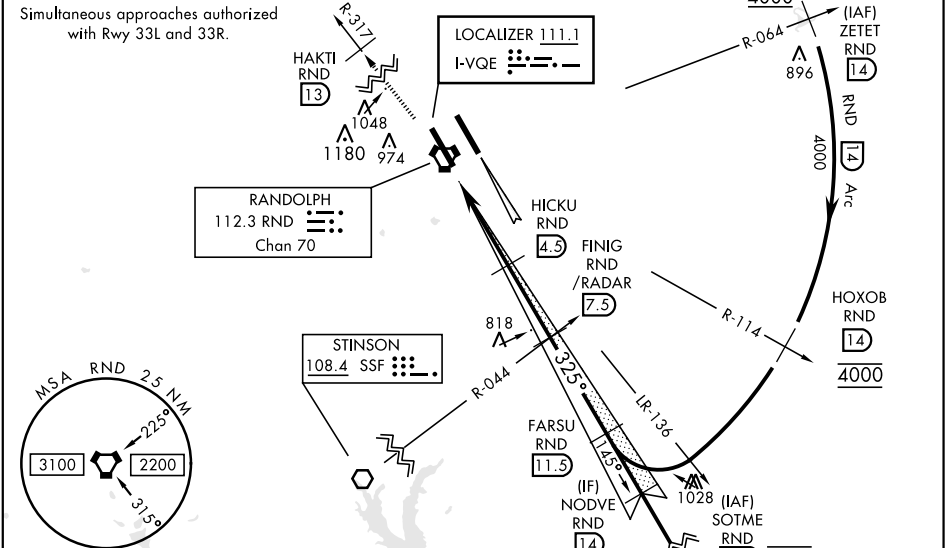


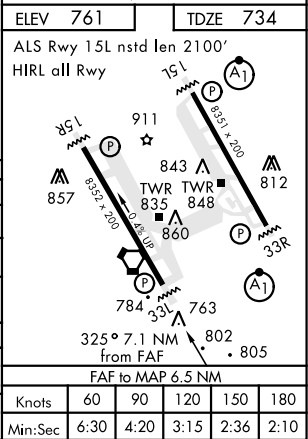
ILS or LOC RWY 33L

| | | | | | | | | | | | |
|--|---------------------|------------------|------------------|--|------------------|---|------------------------|---------------------|------------------|------------------|------------------|
| LOC I-VQE <u>111.1</u> | | APCH CRS 325° | | Rwy Idg 8352 TDZE 734 Arprt Elev 761 | | AL-341 [USAF] | | RANDOLPH AFB (KRND) | | | |
| * Circling not authorized NE of Rwy 15R-33L. | | | | | | MISSED APPROACH: Climb to 3000 out RND VORTAC R-317 to 13 DME (HAKTI). Expect ATC instructions. | | | | | |
| ATIS ★ | SAN ANTONIO APP CON | | RANDOLPH TOWER ★ | | RANDOLPH GND CON | | CLNC DEL (RWY 15L-33R) | HANGOVER ATIS ★ | HANGOVER TOWER ★ | HANGOVER GND CON | |
| 290.525 | 128.05 | 318.1 | 128.25 | 294.7 | 119.65 | 275.8 | 338.35 | 327.8 | 120.5 | 291.1 | 124.75 353.75 |



RADAR or DME REQUIRED
EMERG SAFE ALT 100 NM 4200

| | | | | | |
|----------------------------|-----------------------|-----------------------|------------------------|------------------------|----------------------|
| 3000 RND R-317 | HAKTI RND 13 | † LOC only | FINIG /RADAR 7.5 | FARSU R-145 11.5 | NODVE R-145 14 |
| VORTAC | WAPOP 1 | † HICKU 4.5 | 3100 | 325° | 325° |
| | | † 2100 | GP 3.00° TCH 48 | 3100 | 4000 |
| 0.6 NM 3.5 NM 3 NM | | | | | |
| CATEGORY | A | B | C | D | E |
| S-ILS 33L | 934/40 | | 200 | (200-¾) | |
| S-LOC 33L | 1060/55 | 326 (300-1) | 1060/50 | 326 | (300-1) |
| ☑ CIRCLING* | 1220-1 459 (500-1) | 1280-1 519 (600-1) | 1500-2 739 (800-2) | 1800-3 | 1039 (1100-3) |
| WITHOUT LAST STEP DOWN FIX | | | | | |
| S-LOC 33L | 1120/55 | 386 (400-1) | 1120/60 | 386 | (400-1½) |
| ☑ CIRCLING* | 1220-1 459 (500-1) | 1280-1 519 (600-1) | 1500-2 739 (800-2) | 1800-3 | 1039 (1100-3) |



ILS or LOC RWY 33L

SC-3, 31 DEC 2020 to 28 JAN 2021

SC-3, 31 DEC 2020 to 28 JAN 2021